

Ceiba College Prep

Ceiba is located within the industrial zone of central Watsonville, adjacent to the Highway 152 corridor. Ceiba is a charter school that draws students from neighborhoods throughout Watsonville (see the map that follows).

Grade Levels

6–12

Number of students

517

Students residing within one mile of school

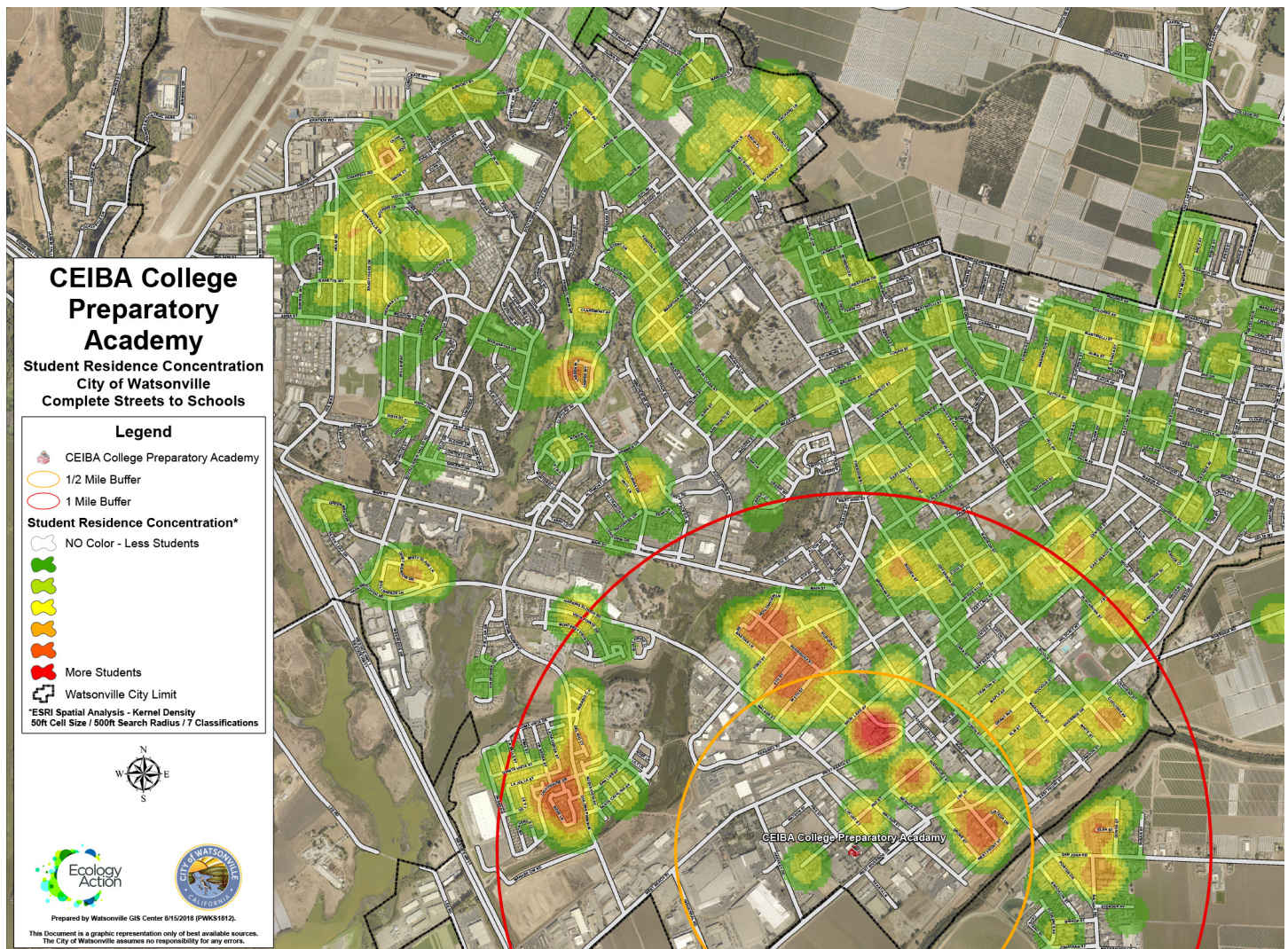
11%

Students qualifying for free or reduced-price meals

92.3%

Students using active transportation

31%

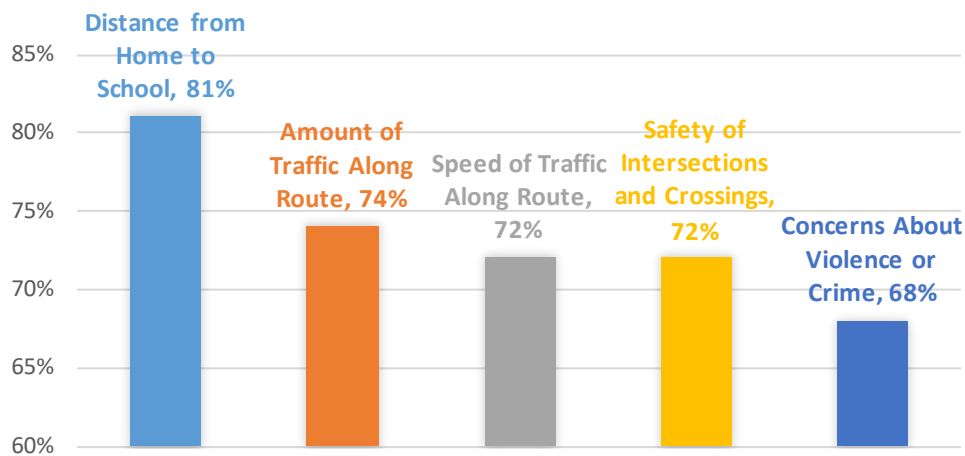


Parent Survey

Ceiba parents were asked to complete a bilingual paper survey about their attitudes toward walking and biking to school in October 2018, and 82 surveys were received. The full survey report is shown in Appendix 2.

The survey asked parents to select the most important issues affecting their decision of whether to allow their child to walk or bike to school. The following graph lists the top five issues for parents whose children do not currently walk or bike to school.

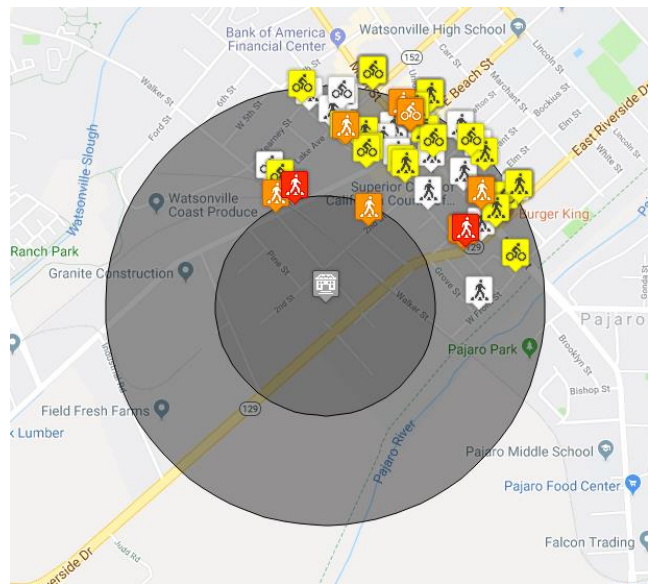
TOP FIVE ISSUES FOR CEIBA PARENTS



Crash Data

The following map shows bicycle and pedestrian collisions that took place within half a mile of Ceiba from 2006–2016. During this 10-year period, 52 pedestrian and 23 bicycle collisions occurred. There were 9 severe-injury collisions and 2 fatalities.

Collision Severity	Bike	Ped
Fatal		
Injury (Severe)		
Injury (Other Visible)		
Injury (Complaint of Pain)		



Existing Infrastructure Conditions

Motorist Conditions

- Parents are directed to a drop-off area on the Ceiba school campus. Many parents drop off and pick up students on Locust Street rather than on the school campus.
- Locust Avenue in front of the school grows congested during the school drop-off period, and parents double-park on Locust to drop off students.
- Parents reported speeding traffic on Riverside Drive, 2nd Street, and Walker Street, which are all major corridors surrounding the school.
- Large truck traffic is common on Walker Street and 2nd Street, while Riverside Drive sees high volumes of commuter traffic.
- There is no school zone signage on Riverside Drive or 2nd Street.
- Parents reported that drivers headed eastbound on Walker Street in the morning have the sun in their eyes, creating low visibility.



Pedestrian Conditions

- There is a sidewalk gap on Locust Street across from the school, and sidewalks on Locust Street are generally in poor condition, with vegetation obstructing the sidewalk in several places.
- The intersection of 2nd Street and Locust Street has transverse crosswalks on two sides. The intersection of 2nd Street and Walker Street has a transverse crosswalk on one side.
- There is continuous sidewalk on both sides of 2nd Street between Locust Street and Main Street.
- There is sidewalk with rolled curb on both sides of Walker Street. The sidewalk is sometimes obstructed by parked trucks.
- The intersection of Walker Street and Beach Street has transverse crosswalks on three sides, is bisected by the rail line, and has missing sidewalk on Walker Street between Beach Street and West Lake Avenue.



Bicycling Conditions

- There are no bicycle facilities on Riverside Drive, Locust Street, or 2nd Street.
- There are Class II bike lanes on Walker Street/Harkins Slough Road between Green Valley Road and Riverside Drive.
- There are Class II bike lanes on Rodriguez Street between Main Street and Front Street, and on West Beach Street between Lee Road and Walker Street.

Audit Observations

- Ceiba is located in the industrial area of Watsonville, which presents significant challenges for students walking or bicycling to school. Streets around the school are heavily used by large trucks, and drivers may not be expecting to share the road with bicyclists and pedestrians.
- Parent volunteers act as crossing guards at the intersections of Locust Street and 2nd Street and 2nd Street and Walker Street.
- There are no high-visibility or yellow crosswalks located near the school. Crosswalks are unmarked in some locations used by students walking to school, such as Riverside Drive at Menker, Locust, and Walker Streets.
- Broken sidewalks, overgrown vegetation, limited lighting, sidewalk gaps, and truck traffic all contribute to challenging conditions for pedestrians.
- While Ceiba students are dispersed across Watsonville, a cluster of students live along Rodriguez Street. Those students use West Lake Avenue, 2nd Street, and Riverside Drive to walk to school.
- Some students are dropped off on the shoulder of Riverside Drive, which parents described as a hazard. They also noted that occasional U-turns occur on Riverside Drive after drivers have dropped off students.



Recommended Infrastructure Improvements around Ceiba College Prep

The following table lists recommendations for Ceiba College Prep, and the following map shows their locations in relation to the school.

Location	Recommendation (where feasible, upon further review)
Riverside Drive/Hwy 129	Install S1-1 with W16-6P school zone signs as appropriate.
Riverside Drive/Hwy 129 at Locust Street	Install high-visibility crosswalk across Locust Street, with curb extensions on both sides of the new crosswalk. Upgrade ramps to meet current standards.
Riverside Drive/Hwy 129 at Menker Street	Install high-visibility crosswalk across Menker Street, with curb extensions on both sides of the new crosswalk. Upgrade ramps to meet current standards.
Riverside Drive/Hwy 129 at Walker Street	Install high-visibility crosswalk on northwest leg of intersection.
Locust Street between Beach Street and Riverside Drive/Hwy 129	Install sidewalk to close sidewalk gaps. Trim overgrown vegetation. Install pedestrian-scale lighting. Long-term: Remove sidewalk obstructions and consolidate or remove driveways where feasible.
School driveway	Widen painted path on north side of driveway to at least eight feet. Trim vegetation to clear pedestrian space. Long-term: Install raised sidewalk.
Locust Street	Install S1-1 with W16-9P School Advance Crossing signs as appropriate.
Locust Street at 2nd Street	Install high-visibility crosswalks on all legs. Install curb extensions on all corners and upgrade ramps to meet current standards.
Walker Street at 2nd Street	Install high-visibility crosswalks on all legs. Install curb extensions to reduce crossing distance across 2nd Street. Upgrade ramps to meet current standards. Short-term: Paint red curb 20' from each corner to prevent parking encroachment.
2nd Street between Rodriguez Street and Pine Street	Study the feasibility of Safe Routes to Schools Corridor treatments, especially near school.
Walker Street between Beach Street and Riverside Drive/Hwy 129	Refresh yellow center lines.
Walker Street between W Lake and Beach Street	Fill sidewalk gaps on west side.
Walker Street at Beach Street	Install ADA-compliant facilities. Reconfigure intersection to shorten both crossings of Walker by installing pedestrian refuge islands and/or curb extensions at SE and NW corner. Add marked crossing on east side of Beach Street. Upgrade ramps to meet current standards. Study additional pedestrian improvements when rail trail segment is constructed.
	See citywide recommendations for 2nd Street/Maple Avenue, Rodriguez Street, and Riverside Drive.

Ceiba College Preparatory Academy SRTS Recommendations Map



Recommendations

- 1 Riverside Drive/Hwy 129:**
Install S1-1 with W16-6P School Advance Crossing signs as appropriate.
- 2 Riverside Drive/Hwy 129 at Locust Street:**
Install high-visibility crosswalk across Locust Street, with curb extensions on both sides of new crosswalk. Upgrade ramps to current standards.
- 3 Riverside Drive/Hwy 129 at Menker Street:**
Install high-visibility crosswalk across Menker Street, with curb extensions on both sides of new crosswalk. Upgrade ramps to current standards.
- 4 Riverside Drive/Hwy 129 at Walker Street:**
Install high-visibility crosswalk on northwest leg of intersection.
- 5 Locust Street between Beach Street and Riverside Drive/Hwy 129:**
Install sidewalk to close sidewalk gaps. Trim overgrown vegetation. Install pedestrian-scale lighting. Long term: remove sidewalk obstructions and consolidate/remove driveways where feasible.
- 6 School driveway:**
Widen painted path on north side of driveway to at least eight feet. Trim vegetation to clear pedestrian space. Long term: install raised sidewalk.
- 7 Locust Street:**
Install S1-1 with W16-9P School Advance Crossing signs as appropriate.
- 8 Locust Street at 2nd Street:**
Install high-visibility crosswalks on all legs. Install curb extensions on all corners. Upgrade ramps to current standards.
- 9 Walker Street at 2nd Street:**
Install high-visibility crosswalks on all legs. Install curb extensions to reduce crossing distance across 2nd Street. Upgrade ramps to current standards. Short term: paint red curb 20' from each corner to prevent parking encroachment.
- 10 2nd Street between Rodriguez Street and Pine Street:**
Study feasibility of Safe Routes to Schools corridor treatments, especially near school.
- 11 Walker Street between Beach Street and Riverside Drive/Hwy 129:**
Refresh yellow center line.
- 12 Walker Street between West Lake and Beach Street:**
Fill sidewalk gaps on west side.
- 13 Walker Street at Beach Street:**
Install ADA-compliant facilities. Reconfigure intersection to shorten both crossings of Walker by installing pedestrian refuge islands and/or curb extensions at SE and NW corner. Add marked crossing on east side of Beach Street. Upgrade ramps to current standards.

APPENDIX 3 - PRIORITIZED PROJECT LIST

Project Number	School Site	Location	Jurisdiction	Recommendation (where feasible, upon further review)	Implementation	Safety	Community Identified Need	Roadway Type	Connectivity And Access	Proximity	Equity	Total Score
CC8	Cesar Chavez	Hammer Drive between Pennsylvania Drive and Arthur Road		Install high-visibility crosswalk with RRFB and pedestrian refuge island across Hammer Drive at Winchester Drive. Narrow vehicle travel lanes to 10' along the no parking segments	10	30	10	0	0	10	15	75
CC9	Cesar Chavez	Hammer Drive at Winchester Drive		Install curb extensions to shorten crossing distance across Winchester Drive and upgrade ramps to current standards.	10	20	10	0	10	10	15	75
CEIBA1	Ceiba College Prep	Riverside Drive	Caltrans	Install S1-1 with W16-6P School Advance Crossing signs as appropriate	15	0	5	10	0	10	15	55
CEIBA10	Ceiba College Prep	2nd Street between Rodriguez Street and Pine Street		Study feasibility of Safe Routes to Schools corridor treatments, especially near school	0	30	10	0	0	10	15	65
CEIBA11	Ceiba College Prep	Walker Street between Beach Street and Riverside Drive		Refresh yellow center line	15	20	10	10	0	10	15	80
CEIBA12	Ceiba College Prep	Walker Street between W Lake and Beach Street		Fill sidewalk gaps on west side	0	30	10	10	10	10	15	85
CEIBA13	Ceiba College Prep	Walker Street at Beach Street		Install ADA-compliant facilities. Reconfigure intersection to shorten both crossings of Walker by installing pedestrian refuge islands and/or curb extensions at SE and NW corner. Add marked crossing on east side of Beach Street. Upgrade ramps to current standards.	0	30	10	10	10	10	15	85
CEIBA2	Ceiba College Prep	Riverside Drive at Locust Street	Caltrans	Install high-visibility crosswalk across Locust Street, with curb extensions on both sides of new crosswalk. Upgrade ramps to current standards	10	0	10	10	10	10	15	65
CEIBA3	Ceiba College Prep	Riverside Drive at Menker Street	Caltrans	Install high-visibility crosswalk across Menker Street, with curb extensions on both sides of new crosswalk. Upgrade ramps to current standards	10	0	0	10	10	10	15	55
CEIBA4	Ceiba College Prep	Riverside Drive at Walker Street	Caltrans	Install high-visibility crosswalk on northwest leg of intersection	15	0	5	10	0	10	15	55

APPENDIX 3 - PRIORITIZED PROJECT LIST

Project Number	School Site	Location	Jurisdiction	Recommendation (where feasible, upon further review)	Implementation	Safety	Community Identified Need	Roadway Type	Connectivity And Access	Proximity	Equity	Total Score
CEIBA5	Ceiba College Prep	Locust Street between Beach Street and Riverside Drive		Install sidewalk to close sidewalk gaps. Trim overgrown vegetation. Install pedestrian-scale lighting. Long term: remove sidewalk obstructions and consolidate/remove driveways where feasible.	0	30	10	0	10	10	15	75
CEIBA7	Ceiba College Prep	Locust Street		Install S1-1 with W16-9P School Advance Crossing signs as appropriate	15	0	10	0	0	10	15	50
CEIBA8	Ceiba College Prep	Locust Street at 2nd Street		Install high-visibility crosswalks on all legs. Install curb extensions on all corners and upgrade ramps to current standards	0	0	10	0	0	10	15	35
CEIBA9	Ceiba College Prep	Walker Street at 2nd Street		Install high-visibility crosswalks on all legs. Install curb extensions to reduce crossing distance across 2nd Street. Upgrade ramps to current standards. Short term: paint red curb 20' from each corner to prevent parking encroachment.	0	10	10	10	0	10	15	55
EAH1	EA Hall	Brewington Avenue at Orchard Street		Upgrade existing crosswalk to raised crosswalk and install curb extensions. Upgrade ramps to current standards. Install high-visibility crosswalk across Orchard Street	10	10	5	5	10	10	15	65
EAH2	EA Hall	South side of Brewington Avenue, near track		Repair broken sidewalk	10	10	5	5	0	10	15	55
EAH3	EA Hall	E Lake Avenue at Brewington Avenue	Caltrans	Install curb extension at existing crosswalk or refuge island if curb extension is infeasible. Install Rectangular Rapid Flashing Beacon. Upgrade ramps to current standards.	10	20	10	10	10	10	15	85
EAH4	EA Hall	E Lake Avenue at Blackburn Street	Caltrans	Consider re-installing crosswalk across E Lake Avenue on south side of intersection. If crosswalk is re-installed, also install refuge island and/or curb extensions and upgrade ramps to current standards.	10	30	10	10	10	10	15	95
EAH5	EA Hall	Palm Avenue between Lincoln Street & Hill Avenue		Repair broken sidewalks	10	30	10	0	0	10	15	75

Project Costs - Ceiba College Preparatory

Location	Recommendation (where feasible, upon further review)	Notes	Cost Estimate
Riverside Drive	Install S1-1 with W16-9P School Advance Crossing signs as appropriate	Consider W16-6P (directional arrow pointing to school zone on side street) - there is no school crossing on Riverside. Cost assumes 1 sign each direction	\$1,000
Riverside Drive at Locust Street	Install high-visibility crosswalk across Locust Street, with curb extensions on both sides of new crosswalk and upgrade ramps to current standards.		\$103,000
Riverside Drive at Menker Street	Install high-visibility crosswalk across Menker Street, with curb extensions on both sides of new crosswalk and upgrade ramps to current standards.		\$103,000
Riverside Drive at Walker Street	Install high-visibility crosswalk on northwest leg of intersection		\$3,000
Locust Street between Beach Street and Riverside Drive	Install sidewalk to close sidewalk gaps. Trim overgrown vegetation. Install pedestrian-scale lighting.	Long term: remove sidewalk obstructions and consolidate/ remove driveways where feasible.	\$427,000
School driveway	Widen painted path on north side of driveway to at least eight feet. Trim vegetation to clear pedestrian space.	Long term: install raised sidewalk.	cost unknown - location unclear
Locust Street	Install S1-1 with W16-9P School Advance Crossing signs as appropriate		\$1,000
Locust Street at 2nd Street	Install high-visibility crosswalks on all legs. Install curb extensions on all corners and upgrade ramps to current standards.		\$212,000
Walker Street at 2nd Street	Install high-visibility crosswalks on all legs. Install curb extensions to reduce crossing distance across 2nd Street and upgrade ramps to current standards.	Short term: paint red curb 20' from each corner to prevent parking encroachment. Assumed 4 curb extensions.	\$212,000
2nd Street between Rodriguez Street and Pine Street	Study feasibility of Safe Routes to Schools corridor treatments, especially near school	Other intersections addressed in other proposals. Assumed 4 curb extensions at Rodriguez; 2 high visibility crosswalks at Menker, 3 speed humps; curb ramp construction and 2 high visibility crosswalks at Pine	\$245,000
Walker Street between Beach Street and Riverside Drive	Refresh yellow center line		\$5,600
Walker Street between W Lake and Beach Street	Fill sidewalk gaps on west side		\$88,000
Walker Street at Beach Street	Install ADA-compliant facilities. Reconfigure intersection to shorten both crossings of Walker by installing pedestrian refuge islands and/or curb extensions at SE and NW corner. Add marked crossing on east side of Beach Street and upgrade ramps to current standards.		\$250,000
		See Citywide recommendations for 2nd/Maple, Rodriguez, and Riverside	0