

Climate Action and Adaptation Plan (CAAP) Update 2023



City Council Meeting, May 9, 2023

Jackie McCloud, Environmental Suitability Manager

Alex Yasbek, Environmental Projects Manager

- ↓ Summary of 2030 CAAP
- ↓ Successes
- ↓ In Progress
- ↓ Future Actions
- ↓ Reporting and Engagement



Summary of 2030 CAAP

GHG REDUCTION TARGETS

- Legally binding commitment - 80% lower than 1990 by 2030
- Aspirational Goal - net negative by 2030



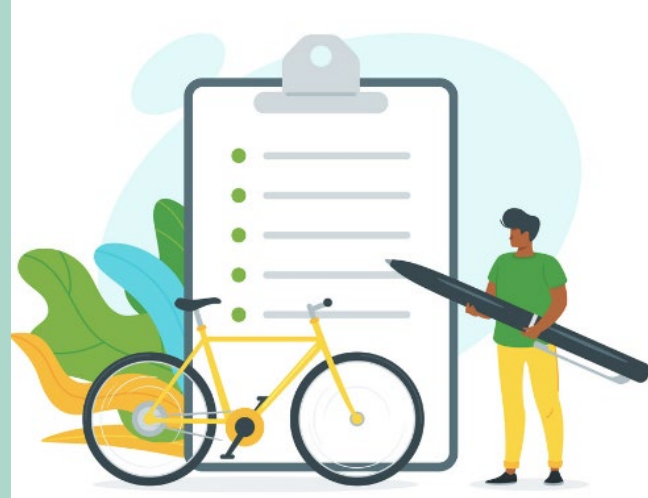
The diagram features a large orange circle in the center labeled 'GHG Reduction'. Inside this circle is a red outline of a car with a lightning bolt between two circles containing minus and plus signs. To the left of the orange circle is a green circle labeled 'Restora' (part of Restoration) containing a green leaf icon. To the bottom right of the orange circle is a purple circle labeled 'Adaptation' containing a green umbrella icon. Below the purple circle is a small green circle labeled 'Restoration'. The background has blue geometric shapes on the right and a blue bar on the left.

GHG Reduction

Adaptation

Restoration

Transportation




Programs



Central Coast
Community
Energy

Go Green

A message from the City Manager



The resources on this page are here to help us all-as staff-support our joint effort to fight climate change. These tools include actions you can take at work, at home, and everywhere in between.

Whether they are a regulatory requirement for our operation as a City, or an optional program only offered to those of us lucky enough to live in the region, please join me in following the sustainable guidelines below. I encourage all of us to take advantage of each opportunity to make our environmental impact smaller and leave the City of Watsonville better for future generations.

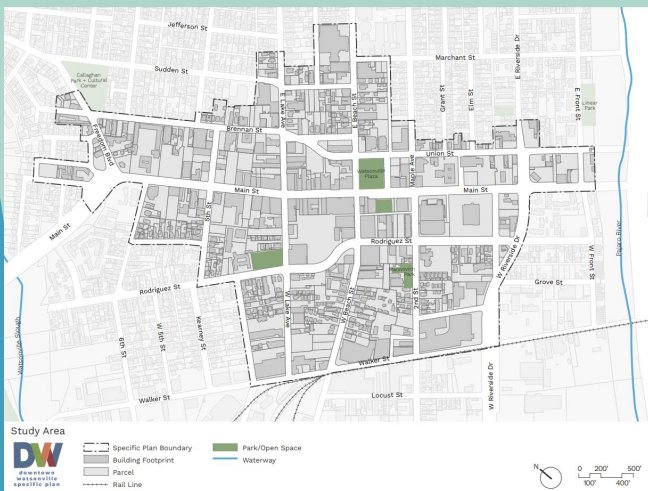
Jump to....

- [In the Office](#)
- [On the Road](#)
- [At Home](#)
- [At the Store](#)
- [Forms and Documents](#)

Regional Climate Project Working Group



Integration and Collaboration



Prepared for: City of Watsonville
Public Works and Utilities
250 Main Street
Watsonville, CA 95076

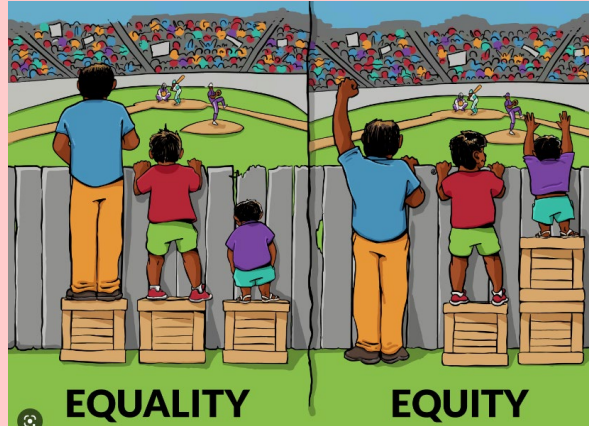
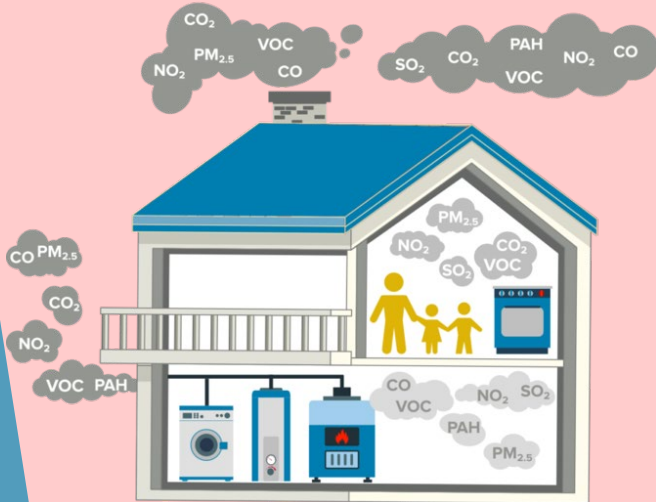
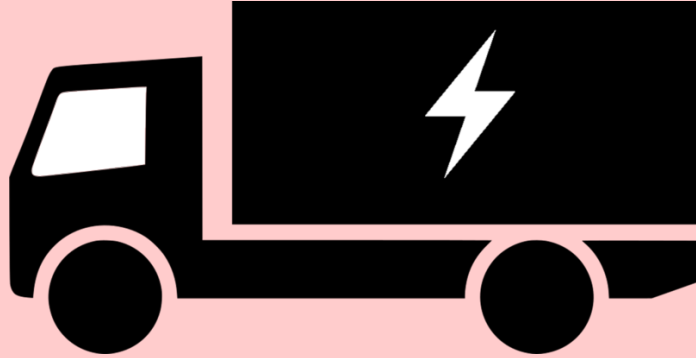


craft water
engineering, inc.

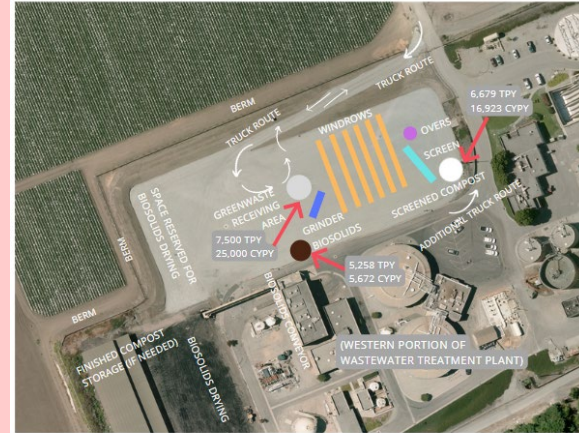
Food and yard waste



In Progress



PROPOSED COMPOST FACILITY AT THE CITY OF WATSONVILLE WASTEWATER TREATMENT PLANT



SCHEMATIC LAYOUT
PREPARED APRIL 2023

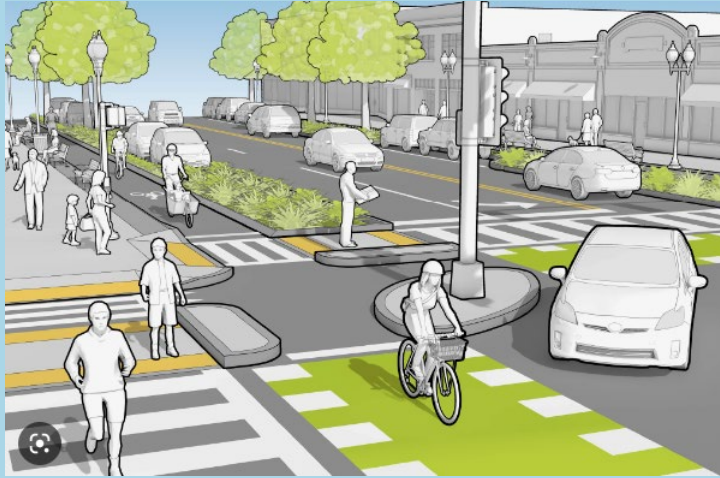
0 150' APPROXIMATE SCALE

PROPOSED QUANTITIES

Material	Annual tonnage	Annual Volume (CY/yr)
Ground Residential yard and food waste	4,300	14,333
Commercial food waste	2,500	7,000
Self-harvested greenwaste and wood waste	1,300	3,867
Subtotal (compostable)	(7,100)	(24,600)
Residuals	5,258	5,672
Total incoming material (TMY)		28,900
Total landfilled material volume (TMY)		23,566
Total final reduced volume (TRV)		16,923
Total final weight (tons)	6,679	

ABBREVIATIONS
TPY: TONS PER YEAR
CY: CUBIC YARDS
CYPY: CUBIC YARDS PER YEAR

Coming Soon



Reporting and Engagement

Projects

What We Do

Services

Conservation

Public Participation

Business Resources



WATSONVILLE

PUBLIC WORKS

CALIFORNIA



Search...



Carbon Fund Ordinance



Greenhouse Gas Reduction Measures



How to Reduce Your Carbon Footprint



Residential Organics Collection Program



Backyard Composting



Edible Food Recovery Program for Watsonville Commercial Business

Home » Departments » Public Works & Utilities » How Do I? » Learn About Climate Action Plan

Watsonville Climate Action & Adaptation Plan



Watsonville 2030 Climate Action & Adaptation Plan

Bold climate leadership

Contact Us

Community Development Department

Physical Address

250 Main Street

Watsonville, CA 95076

Phone: 831-768-3050

Hours

Monday - Friday 8:00 AM to 12:00 PM and 1:30 PM to 4:00 PM

Planning Division Hours: Monday - Friday 8:00 AM to 12:00 PM

Clean Energy Transformation

Electricity: Renewable / Efficiency

39.97%

Renewable Energy Statewide in 2021

On track

Average Fuel Use

3,371.18

Spent per Person on Petroleum in 2019

On track

Statewide Net Greenhouse Gas Emissions

13.77

Million Metric Tons of Carbon Dioxide Equivalent Emissions in 2017

On track

Total Energy Use

33,806

Thousand Barrels of Oil Consumed in 2020

On track

Transportation

472 M

Gallons of Petroleum Used for Ground Transportation in 2022

Needs improvement

Business Sector Energy Efficiency

6.7%

Average Percent Reduction in Energy Use in the Business Sector in 2021

Measuring

RESILIENT SANTA CRUZ COUNTY

ESSENTIAL OPPORTUNITIES FOR LOCAL CLIMATE ACTION



Login

Sign up

English

¡Únete a revertir el cambio climático en nuestra ciudad! Join in reversing climate change in our city!

JOIN THE CHALLENGE

WHY JOIN

Questions

Contact us at any time:

Jackie McCloud
831 768 3172
Jackie.McCloud@watsonville.gov

Alex Yasbek
831 768 3160
Alex.Yasbek@watsonville.gov

<https://resilientsantacruzcounty.org/watsonville>

