



CAMPERS, MOTOR HOMES, OVERSIZED VEHICLES, & ILLEGAL PARKING ON CITY STREETS

JORGE ZAMORA
CHIEF OF POLICE



Current Practice & Efforts

- When a report is received of an RV or camper, and we send out an officer or a police service specialist to move the individual(s) along or take enforcement action and refer them services-The CARE team.
- Most people move. They either leave the city or move to a different area of the city.
- The occupied RV's normally stay out of residential areas, and for the most part just move around in commercial and industrial zones.

Applicable Laws

California Vehicle Code:

CVC 22651(o)- Registration Expired over 6 months

CVC 22651(k)- Parked longer than 72 hrs

Watsonville Municipal Code:

WMC-4-4.203 Unlawful to park longer than time limit

4-4.205 Unlawful to extend time limits by moving vehicles.

4-4.210 Use of public parking lots for storage of vehicles prohibited.



Impacts

- Safety
 - Drug Use
 - Sewage
 - Crime
 - “VanLords”
-



Neilson and Hanger

- Have conducted relentless enforcement: Have issued 74 citations, that do not include “Intent to Tow” notices.
 - CARE Team is also utilized as needed and has done more focused work in this area.
-



WATSONVILLE
POLICE

What are we doing or have done?

- Collaborate with other Departments
- Conduct additional patrols when possible
- Support Public Works conduct clean ups,
- Sidewalk curbs have been painted red to reduce parking opportunities
- Street parking hours have been modified to prevent overnight parking
- Continue to enforce the law when applicable and provide extra patrol in impacted areas
- Count/track the number of RVs in the City

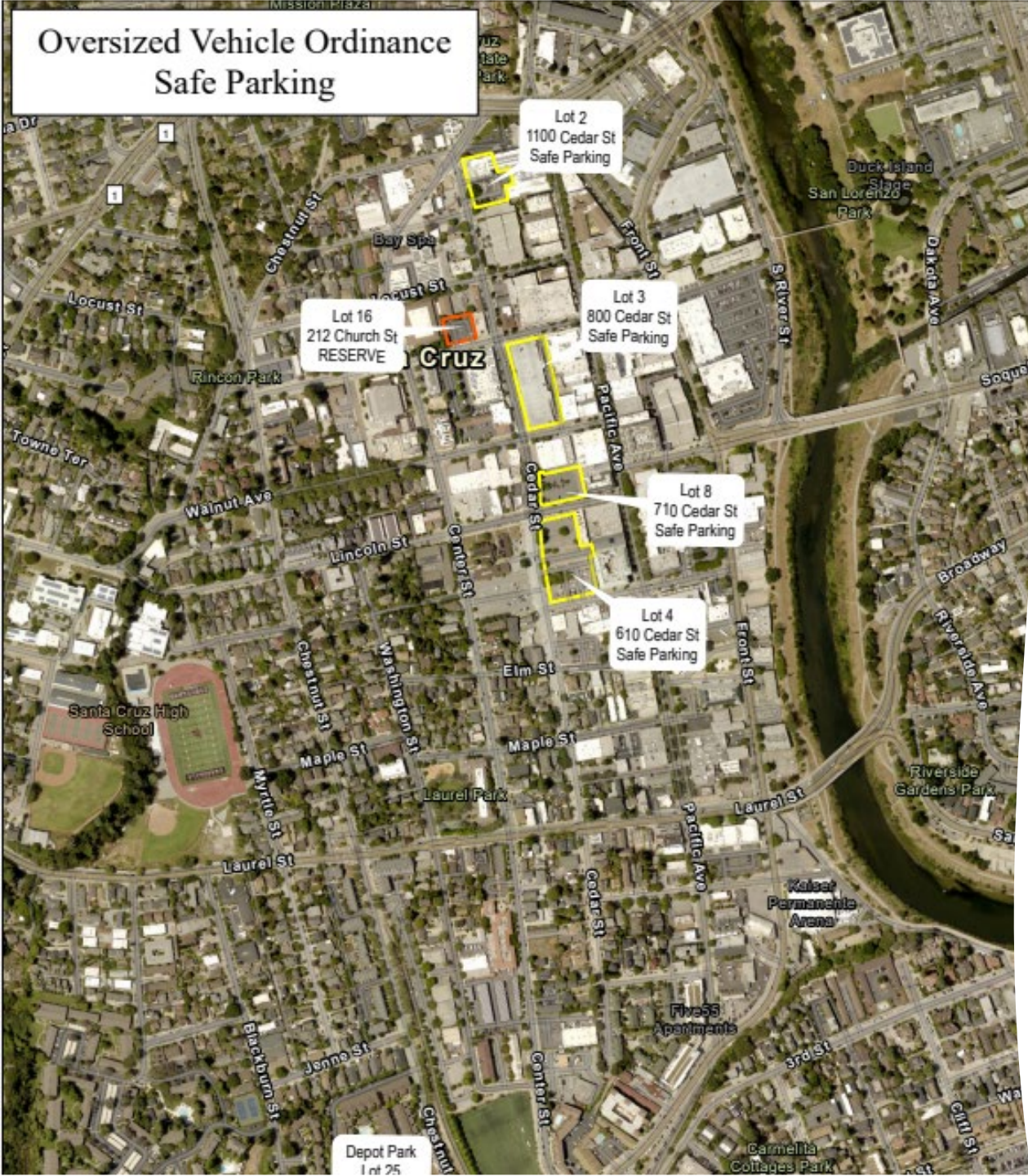


What more can we do?

- Look to hire a full time PSS to address this issue full time.
 - Challenging for an Officer to respond to calls, sometimes it is delayed.
 - Having a full time PSS will help address these calls faster. Schedule can also be modified to fit the greater need as it comes to light.
 - Monitoring would improve, we would be able to better offer services and/or enforce laws when appropriate



Oversized Vehicle Ordinance Safe Parking



Santa Cruz Ordinance

Starting in December 2023, anyone who would like to park their oversized vehicle on the street overnight in the City of Santa Cruz between midnight and 5:00 a.m. will be required to purchase a permit, and those who live in their oversized vehicles may enroll in an off-street safe parking program. An oversized vehicle is defined as: (a) more than 20' in length, or (b) more than 8' tall and more than 7' wide.

- Several lots where designated areas to park
- An Oversized Vehicle Overnight Parking Permit must be displayed between the hours of 12AM-5AM every day, for vehicles >20 feet long or >8 feet tall & >7 feet wide, exclusive of fixtures, accessories, or property.

Parking permits only issued to residents who provide proper identification.

- PERMIT AVAILABILITY AND COST: • Residential Permits: \$12.00 per year (allows a resident to park an oversized vehicle for four periods of up to 72 consecutive hours per calendar month, only one vehicle permitted per residence)

The Long-term Safe Parking Program

- provides space for oversized vehicles at the National Guard Armory. This program provides 24/7 parking and participants may stay up to six months. Case management, housing navigation, health care, and hygiene services are provided on-site. Space is limited for this program. Participants must adhere to a code of conduct.

Adopting a Similar Ordinance in Watsonville?

- Would need to work with the City Attorney to understand all the legal requirements/nuisances of adopting such an Ordinance
- Would need to establish clear parameters that fit Watsonville
- May need to designate areas where parking would be allowed with a permit
- May need to allocate additional resources for enforcement and also consider contracting to provide case management services