

# Agenda Report



**MEETING DATE:** Tuesday, May 14, 2024

**TO:** City Council

**FROM:** PUBLIC WORKS & UTILITIES DIRECTOR LINDBERG  
ENVIRONMENTAL PROJECTS MANAGER VU-DUC

**THROUGH:** CITY MANAGER MENDEZ

**SUBJECT:** AMEND CONTRACT WITH WALLACE GROUP FOR RAMSAY  
PARK GREEN INFRASTRUCTURE DESIGN TO INCLUDE  
PATHWAY LIGHTING FOR AN ADDITIONAL \$7,000

---

## **RECOMMENDED ACTION:**

Staff recommends that the City Council adopt a resolution approving a first amendment to contract #2982 with Wallace Group, a California corporation, to expand scope of work to include lighting design services for the switchback pathway at Ramsay Park, increasing the contract compensation by \$7,000 for a new amount not-to-exceed \$126,175, and authorizing and directing the City Manager to execute the amendment. Funding for the lighting design amendment is included in the City's approved budget split evenly across three accounts: 0710-911-7855 (\$2,333.34), 0740-912-7855 (\$2,333.33), and 0720-913-7855 (\$2,333.33).

## **BACKGROUND:**

The California Natural Resources Agency (CNRA) awarded the City of Watsonville an Urban Greening Program grant of \$827,853.40 to design and construct three green infrastructure features for the new Nature Center development at Ramsay Park: a green roof, an enhanced bio-swale, and a fully accessible, tree-lined switchback pathway leading from the Harkins Slough Road parking lot up to the new building. The City Council appropriated these funds at a meeting October 25, 2022 (Resolution No. 217-22). On February 27, 2024, City Council approved Resolution No. 28-24 awarding the design contract for these features to Wallace Group, in an amount not to exceed \$119,175, the maximum allowable by the grant rules for design services. The City executed contract #2982 with Wallace Group under these terms on March 14, 2024.

## **DISCUSSION:**

Two existing pathways lead from the parking lot around a grassy hill to the site for the new Nature Center building—also referred to as Phase 3 of the larger Ramsay Park development. Permitting requires one American Disabilities Act (ADA)-accessible path to feature lighting.



Figure 1 Map showing the southeast quadrant of Ramsay Park, with the existing ADA-compliant path in yellow.

The CNRA grant funds will build an additional ADA-compliant pathway through the grassy hill, creating plant-based features as part of the Nature Center outdoor exhibition experience. This does not fund lighting, however, this cost will need to be funded from other budgets. Fortunately, this funding was set aside as part of the wider park renovation and can be applied to the new grant-funded switchback pathway designed by Wallace Group (shown below):

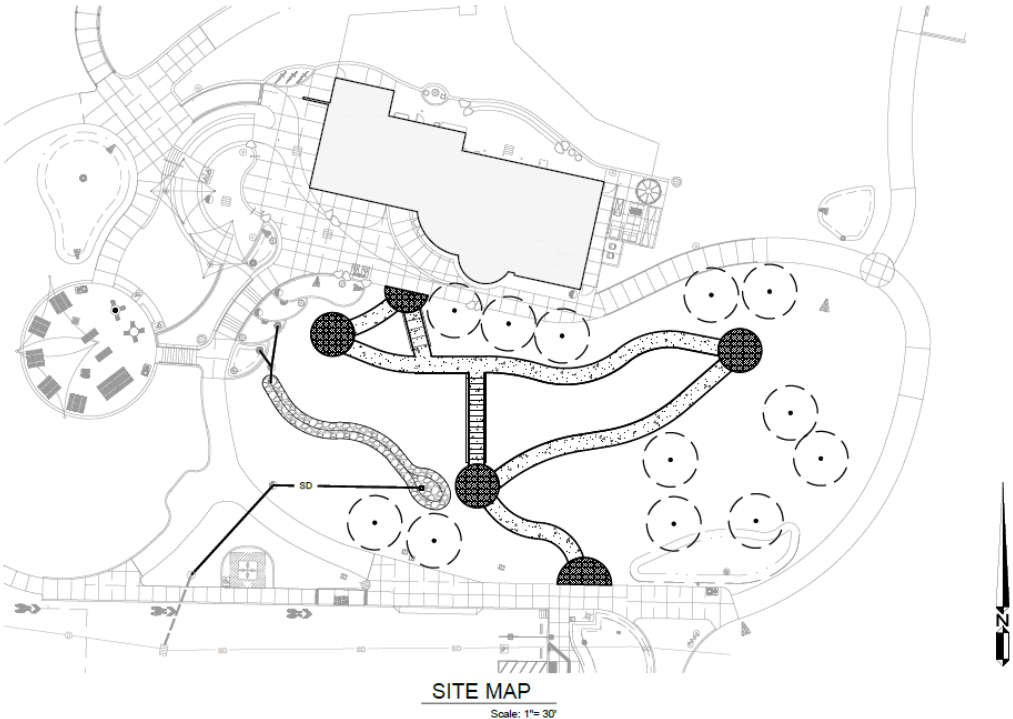


Figure 2 Map showing the additional grant-funded switchback path from the Harkins Slough Rd parking lot to Nature Center.

**STRATEGIC PLAN:**

2-Infrastructure & Environment

7-Efficient and Well-performing Government

**FINANCIAL IMPACT:**

To meet the permitting requirements for lighting and apply the lighting design to the grant-funded ADA path, the lighting design can be added to the scope of Wallace Group's contract to deliver as an integrated package with the environmental, civil engineering, and landscaping professional services for an additional \$7,000 to their original proposed bid.

Funding for the lighting design amendment is included in the City's approved budget and can be split evenly across three accounts supporting the Nature Center: 0710-911-7855 (\$2,333.34), 0740-912-7855 (\$2,333.33), and 0720-913-7855 (\$2,333.33).

**ALTERNATIVE ACTIONS:**

The following actions are proposed as alternatives to meet the lighting requirements:

1. Contract the lighting design separately from the rest of the pathway development. This option is considered more costly because it would duplicate administration and time charges to coordinate the lighting design as a separate contract and project with the existing 3 phases and 2 contracts for the project.
2. Develop a lighting design for the existing ADA-compliant path along the eastern edge of the grassy hill. This option is considered less advantageous because it leaves the main entrance along the switchback path without lighting.

**ATTACHMENTS AND/OR REFERENCES (If any):**

None.