

**118 1<sup>ST</sup> STREET  
LOW-BARRIER  
NAVIGATION  
CENTER – RECURSO  
DE FUERZA**

---

Overview for City Council



# **118 1<sup>ST</sup> STREET - LOW-BARRIER NAVIGATION CENTER – RECURSO DE FUERZA**

- Joint project between County of Monterey and County of Santa Cruz
- Intended to house individuals displaced by the Pajaro Valley River Levee Replacement Project
- County of Monterey received an Encampment Resolution Funding (ERF) grant of \$7,986.354 from the California Department of Housing and Community Development (HCD) to fund construction and operation of a 34-bed non-congregate interim housing program named “Recurso de Fuerza” for a two-year period.
- After the two-year grant period ends, the County of Santa Cruz intends to prioritize available funding resources to continue operating the Recurso de Fuerza site as a continuing resource for unsheltered people throughout southern Santa Cruz County, including recuperative care and short-term post-hospitalization housing capacity.

# **118 1<sup>ST</sup> STREET - LOW-BARRIER NAVIGATION CENTER – RECURSO DE FUERZA**

A “low-barrier navigation center” is defined as a housing-first, low-barrier, service-enriched shelter focused on moving people into permanent housing that provides temporary living facilities while case managers connect individuals experiencing homelessness to income, public benefits, health services, shelter, and housing.

“Low barrier” means best practices to reduce barriers to entry, and may include:

- The presence of partners
- Pets
- Storage of possessions
- Privacy

# 118 1<sup>ST</sup> STREET - LOW-BARRIER NAVIGATION CENTER – TIMELINE

## Timeline:

- October 24, 2023 – Initial submittal
- November 29, 2023 – Guidance Letter sent to applicant
- November 2023 – June 2024 – Building and Planning Staff meetings with applicant
- July 11, 2024 – Second submittal
- July 26, 2024 – Second submittal response letter sent to applicant
- August 23, 2024 – Third submittal
- September 20, 2024 – Zoning Clearance approved



**118 1<sup>ST</sup> STREET  
LOW-BARRIER  
NAVIGATION  
CENTER —  
SITE  
RENDERING**

---



118 1<sup>ST</sup> STREET  
LOW-BARRIER  
NAVIGATION  
CENTER —  
SITE PLAN  
DIAGRAM

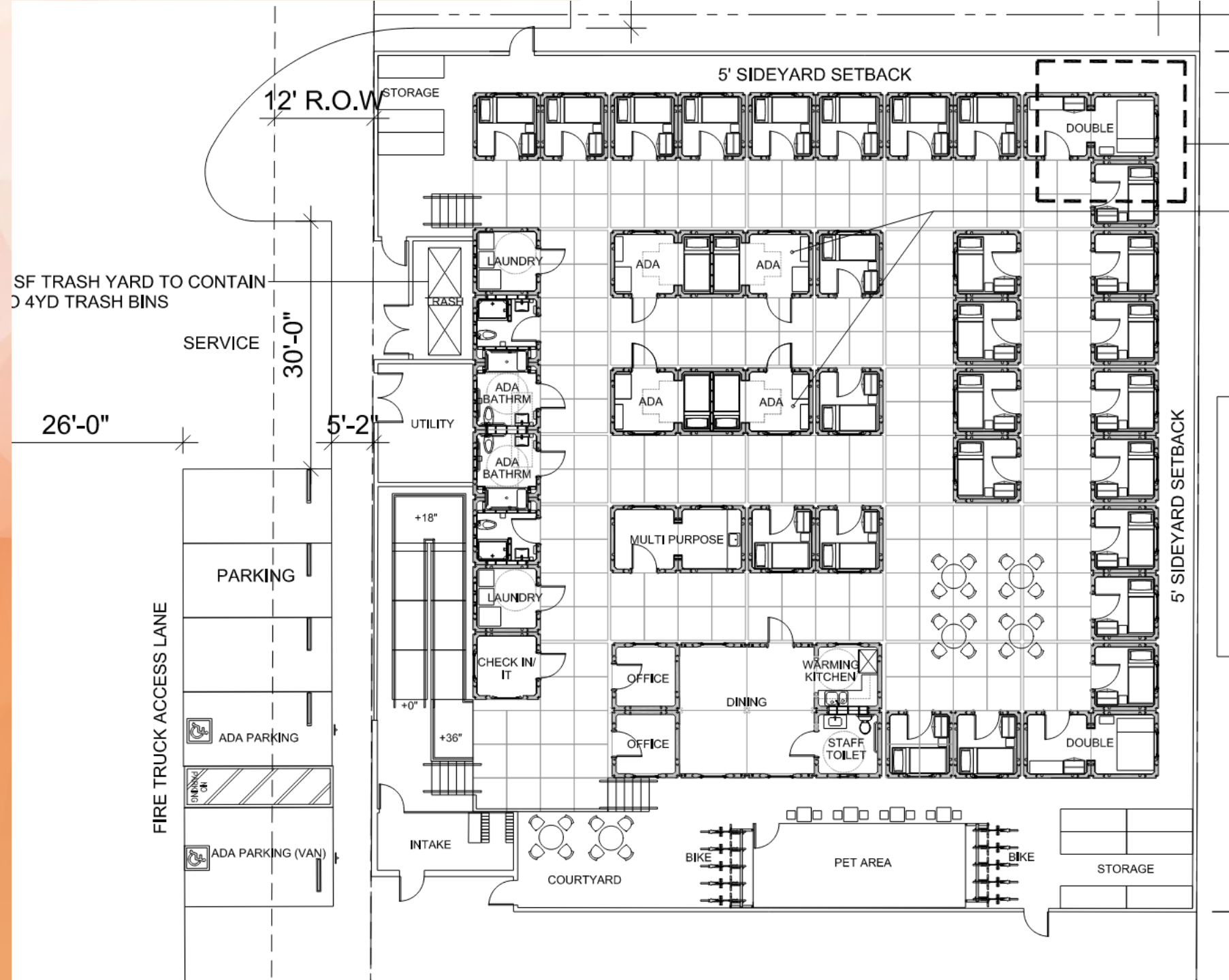
---



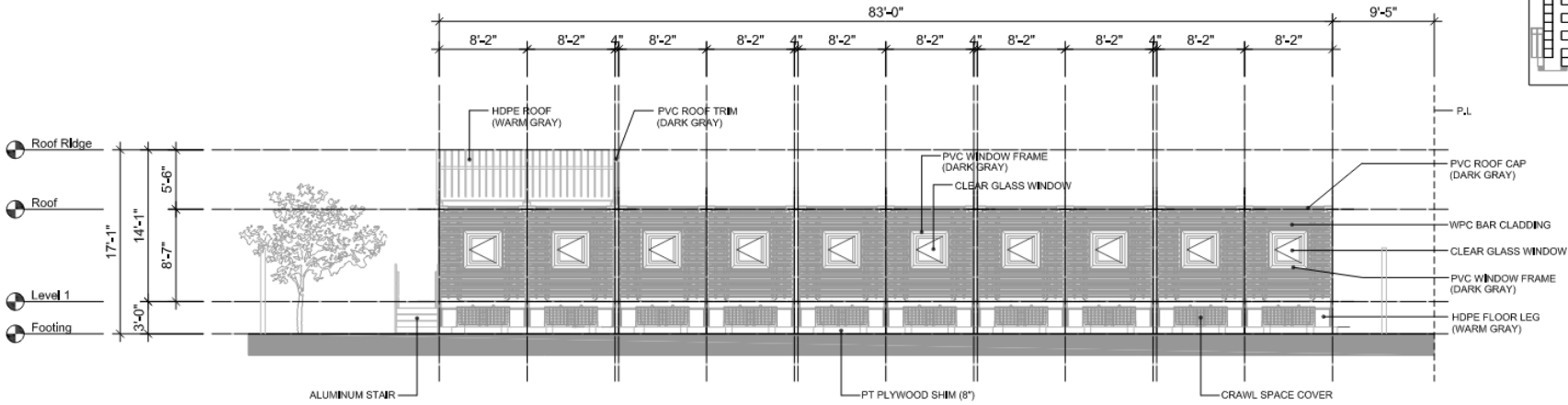
\_\_\_\_\_



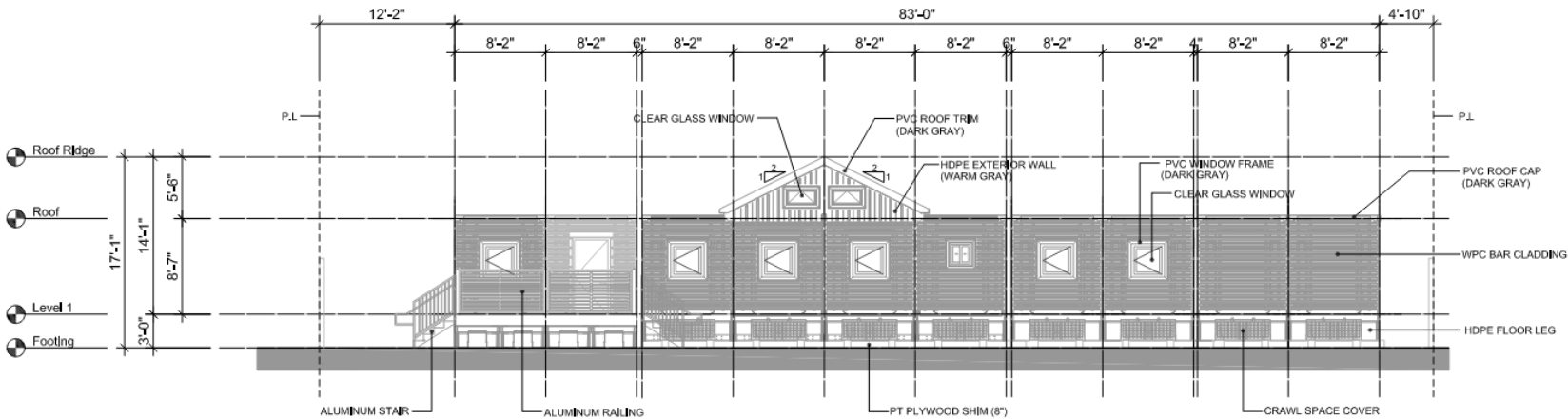
# 118 1<sup>ST</sup> STREET LOW-BARRIER NAVIGATION CENTER – SITE PLAN



118 1<sup>ST</sup> STREET  
LOW-BARRIER  
NAVIGATION  
CENTER —  
ELEVATIONS



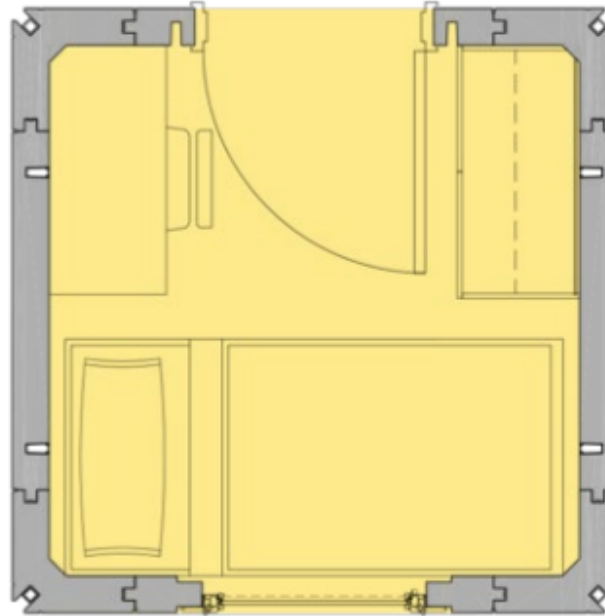
OVERALL SITE ELEVATION -EAST SCALE: 3/16" = 1'-0"



OVERALL SITE ELEVATION -SOUTH SCALE: 3/16" = 1'-0"

118 1<sup>ST</sup> STREET  
LOW-BARRIER  
NAVIGATION  
CENTER —  
LIFEARK  
MODULAR  
UNITS

---



## Shelter Bed Single

- 1 x 1 Single Shelter (65 sf)
- Power / lighting
- Wall AC / heater

### Options

- Automatic Fire Sprinkler (NFPA 13D)
- Drywall or MgO Painted Interior
- Cladding
- Deck / Stair/Ramp
- Solar Panels
- Furnishing / Appliances



# 118 1<sup>ST</sup> STREET - LOW-BARRIER NAVIGATION CENTER – RENDERINGS



# 118 1<sup>ST</sup> STREET LOW-BARRIER NAVIGATION CENTER – REQUIREMENTS

---

## AB101

AB 101 (commencing with Section 65660 of the California Government Code) pertaining to low-barrier navigation center regulations prescribes the following:

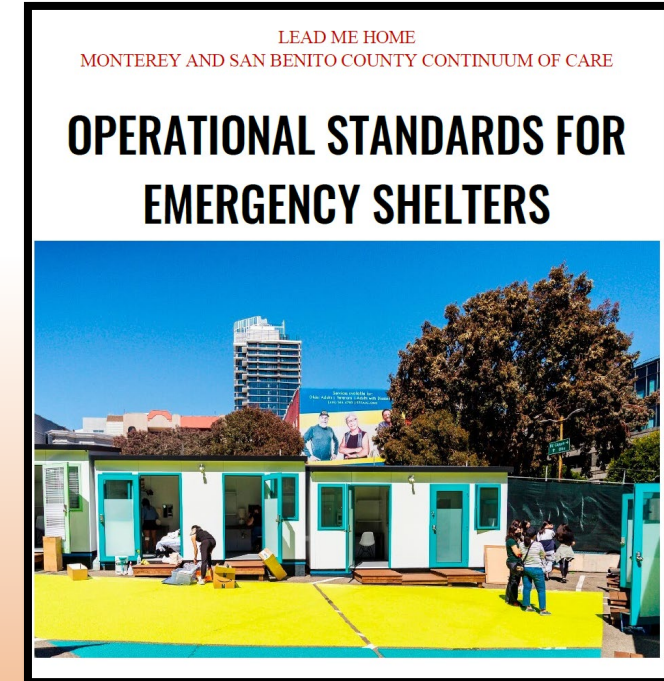
- Provides a “by-right” process and expedited review for low-barrier navigation centers in certain types of zones.
- Prohibits local governments from requiring a conditional use permit or other discretionary approval of low-barrier navigation centers in mixed-use and nonresidential zones permitting multifamily uses if certain operational standards are met, including:
  - Connected Services – Services to connect people to permanent housing through a services plan that identifies services staffing
  - Coordinated Entry System – A centralized or coordinated assessment system designed to coordinate program participant intake, assessment, and referrals.
  - Code Compliant – Complies with Chapter 6.5 of Division 8 of the Welfare and Institutions Code.
  - Homeless Management Information System – It has a system for entering information regarding client stays, demographics, income, and exit destination through the local Homeless Management Information System.

# 118 1<sup>ST</sup> STREET LOW-BARRIER NAVIGATION CENTER – OPERATIONAL STANDARDS

---

## Operational Standards for Emergency Shelters

- Lead Me Home, Monterey and San Benito County Continuum of Care
- Includes:
  - Access standards
  - Services standards
  - Operations standards
  - Facilities, Health, and Safety standards



# 118 1<sup>ST</sup> STREET LOW-BARRIER NAVIGATION CENTER – GOOD NEIGHBOR PROTOCOL

---



## Good Neighbor Protocol

### Purpose

- To establish and maintain positive relationships among the navigation center operator, program participants, and the community.
- Shelter program staff and program participants must commit to be good neighbors to the community, respecting the site and the surrounding community.
- Protocol includes:
  - Maintaining a clean environment
  - Proper hygiene and attire
  - Noise
  - Site security
  - Community and coordination with the neighborhood

# 118 1<sup>ST</sup> STREET LOW-BARRIER NAVIGATION CENTER — COMPLETENESS REVIEW & DETERMINATION LETTER

---

## Completeness Review

- City Staff reviewed the application for a Zoning Clearance and determined that the required information had been provided.
- Zoning Clearance application #PP2023-6297 was approved on Friday, September 20, 2024.
- The applicant can now move forward to building permit submittal.

## Determination Letter

- The determination letter included feedback from all City department, including Planning, Building, Public Works, Fire, and Police.
- City Staff requested additional or clarifying information to be submitted with the building permit submittal related to:
  - Fencing, landscaping, & ingress/egress striping
  - Fire requirements (fire sprinklers, fire extinguishers, etc.)
  - Occupancy, allowable openings, ingress/egress, & accessibility
  - Utility locations, electric service, pet waste, alignment with upcoming Caltrans improvements at 1<sup>st</sup> Street/CA-129
  - On-site surveillance system