

# CIVIC CENTER WATSONVILLE LIBRARY ROOFTOP ADDITION

---



# AGENDA

---

- Introduction
- Plan Rendering
- Renderings
- Green Design
- 65% Documents
- Project Schedule
- Project Cost Estimate

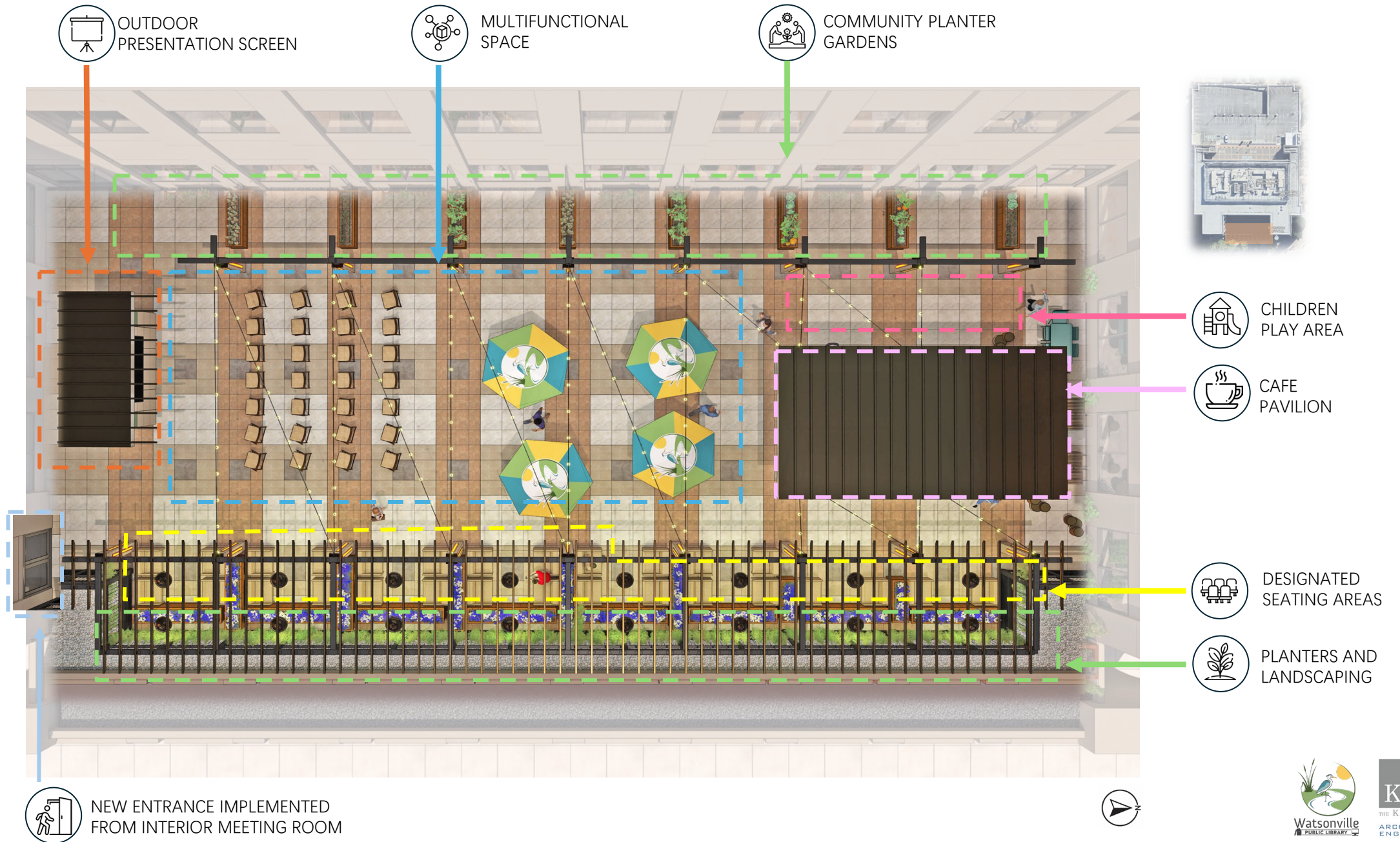


# INTRODUCTION





# PLAN RENDERING







**COMMERCIAL  
GRADE STRING  
LIGHTS** BRIGHTEN  
THE SPACE DURING  
EVENING HOURS



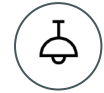
**CAFE PAVILION:**  
BEVERAGE AND  
LIGHT PREP SPACE  
FOR EVENTS



**COMMUNITY  
PLANTER  
GARDENS:** PROVIDE  
OPPORTUNITY FOR  
COMMUNITY  
INVOLVEMENT AND  
PLANTINGS



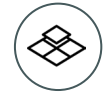
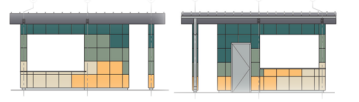
# RENDERING



**LOW HANGING  
PENDANT LIGHTS**  
FOR AMBIENCE  
DURING EVENING  
HOURS



**LED LIGHTING**  
INCORPORATES  
FULL COLOR  
SPECTRUM  
OPTIONS



**PANELS**  
FOLLOWING THE  
COLOR SCHEME OF  
THE LIBRARY



**PLANTINGS**  
FACING MAIN ST.



**DESIGNATED  
SEATING AREAS**





**NEW ENTRANCE IMPLEMENTED:**  
ALLOWS DIRECT ACCESS FOR STAFF FROM MEETING ROOM



**OUTDOOR SCREEN**  
MAY BE UTILIZED FOR PRESENTATIONS, COMMUNITY MOVIE EVENTS, FITNESS CLASSES AND MORE



**CAFE PAVILION:**  
PROVIDES OPERABLE OPENINGS FOR PATRON ACCESS ON BOTH LIBRARY AND STREET FACING SIDES





## Green+Purple+White



Botanical Name: *Dichelostemma* spp.  
Common Name: blue dicks  
Bloom Time: Jan to Sep  
Color: pink, red, white, or purplish blue  
Water Usage: Very Low  
Height: 12-16 inches tall

Botanical Name: *Scilla peruviana* (*Scilla hughii*)  
Common Name: giant scilla  
Bloom Time: Apr to Jul  
Water Usage: Very Low  
Height: less than 1 foot tall

Botanical Name: *Achillea ageratifolia*  
Common Name: Greek yarrow  
Bloom Time: Apr to Jul  
Water Usage: Low  
Height: 4-8 inches tall



**PLANTINGS  
FACING MAIN ST.**  
COLOR SCHEME  
SELECTION



**MULTIFUNCTIONAL  
SPACE**  
MAY BE UTILIZED AS  
A MULTI-PURPOSE  
PRESENTATION AND  
EVENT SPACE



# GREEN DESIGN



**E. INDOOR ENVIRONMENTAL QUALITY, 7**  
LOW-EMITTING MATERIALS-ADHESIVES AND SEALANTS



**E. INDOOR ENVIRONMENTAL QUALITY, 8**  
LOW-EMITTING MATERIALS-PAINTS



**B. WATER EFFICIENCY, 1. A.**  
USE HIGH EFFICIENCY DRIP IRRIGATION SYSTEMS



**ACCESSIBILITY**  
GREATER ACCESS FOR PEOPLE WITH DISABILITIES



**D. MATERIALS AND RESOURCES**  
STORAGE & COLLECTION OF RECYCLABLES



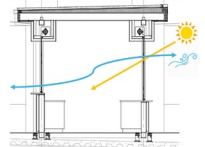
**A. SUSTAINABLE SITES, 5. A.**  
ASSURES CYCLIST THAT THEIR BIKE IS SECURELY PARKED



**A. SUSTAINABLE SITE, 5. D.**  
PARKING CAPACITY:  
LOCATED NEXT TO A PARKING GARAGE



**A. PUBLIC TRANSPORTATION ACCESS, 5. A.**  
6 MIN WALK FROM NEAREST BUS STATION



**E. INDOOR ENVIRONMENTAL QUALITY, 4**  
CAFE PAVILION IS NATURALLY VENTILATED WITH OPENINGS ON WEST AND EAST SIDE.



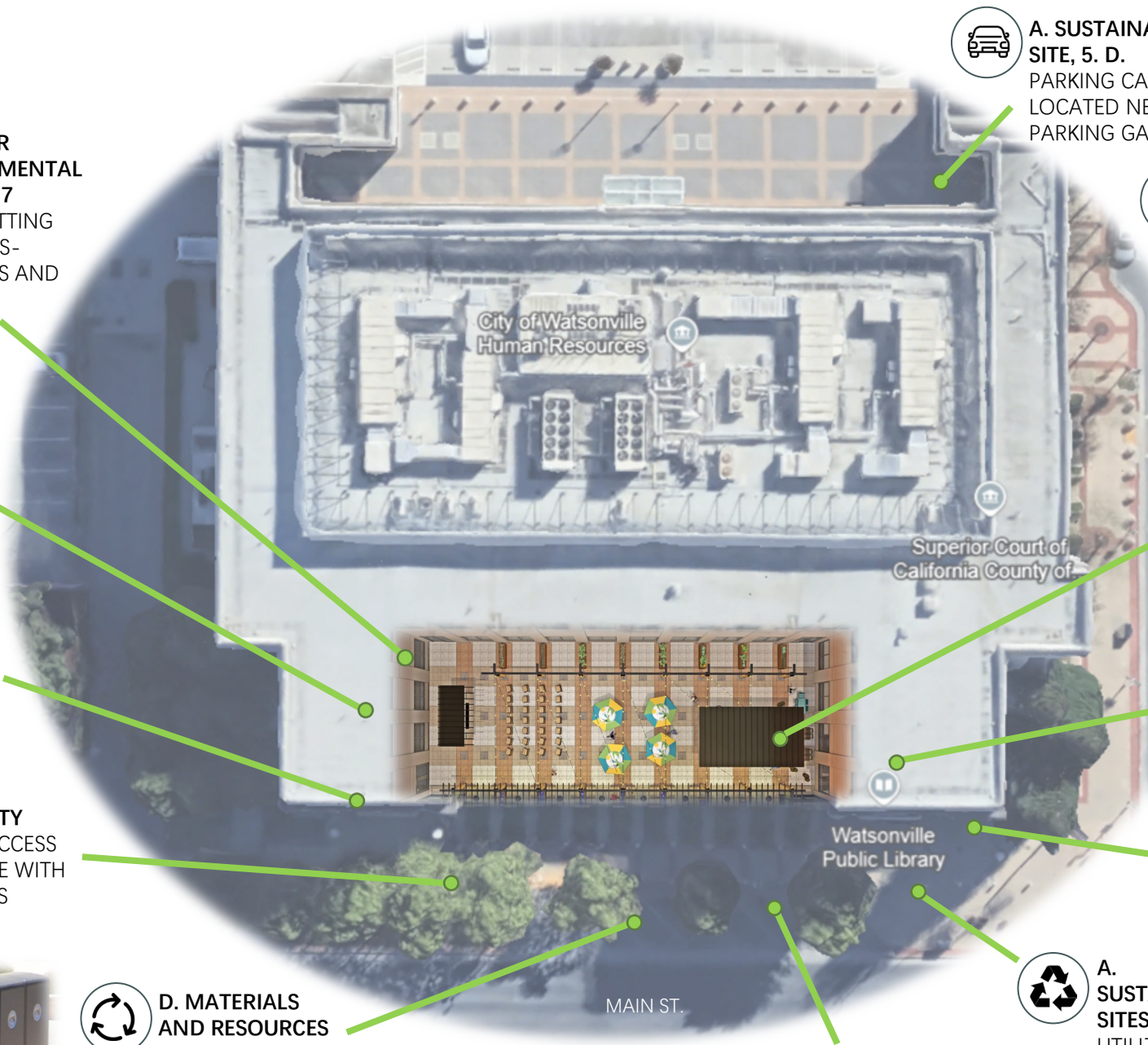
**D. MATERIALS AND RESOURCES, 2.-4. A.**  
AT LEAST 75% OF EXISTING BUILDING STRUCTURE AND SHELL IS MAINTAINED

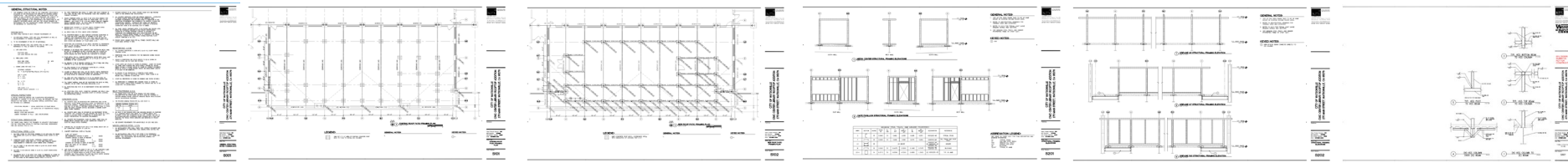


**E. INDOOR ENVIRONMENTAL QUALITY, 16**  
DAYLIGHT & VIEWS-  
DAYLIGHT 75% , 90%

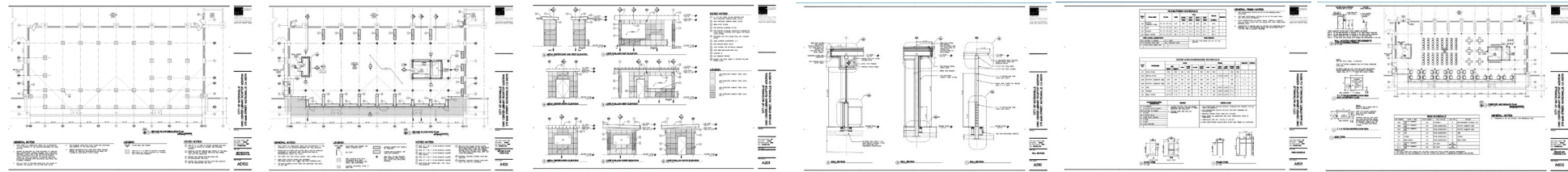


**A. SUSTAINABLE SITES, 2**  
UTILIZED SITE OF EXISTING URBAN LIBRARY

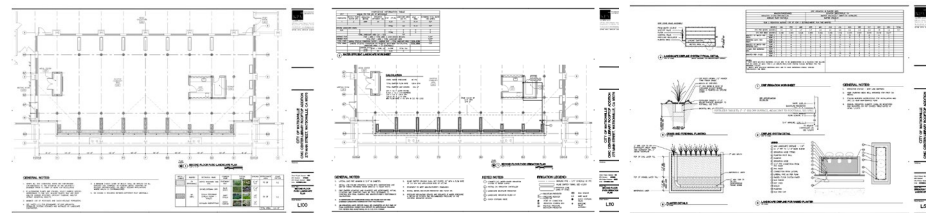




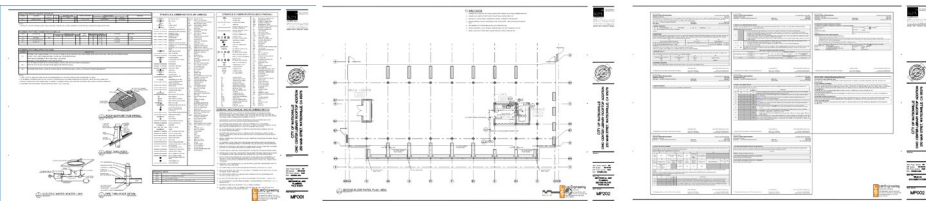
**STRUCTURAL:** STRUCTURAL GENERAL NOTES, FRAMING PLANS, FRAMING ELEVATIONS, STRUCTURAL DETAILS



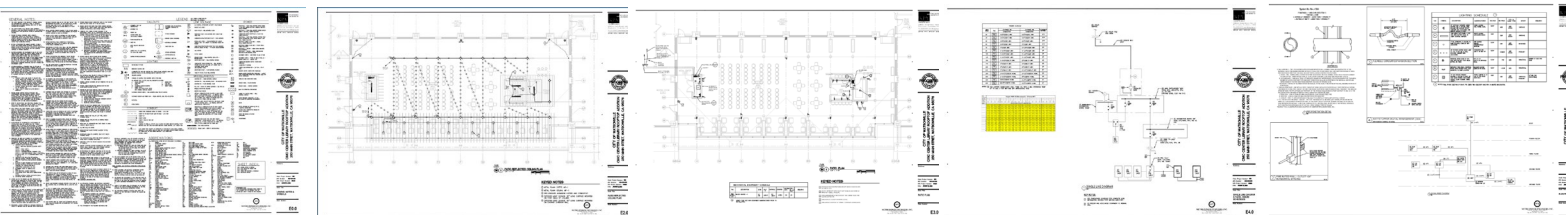
**ARCHITECTURAL:** DEMOLITION PLAN, FLOOR PLANS, ELEVATIONS, SECTIONS, DETAILS, SCHEDULES, ETC.



**LANDSCAPE:** LANDSCAPE PLAN, IRRIGATION PLAN, IRRIGATION TABLE & LANDSCAPE DETAILS



**MECHANICAL AND PLUMBING:** TITLE SHEET, TITLE-24 DOCUMENTATION, MECHANICAL & PLUMBING FLOOR PATIO PLAN



**ELECTRICAL:** LEGEND, NOTES, & SYMBOLS, PATIO REFLECTED CEILING PLAN, PATIO PLAN, SINGLE LINE DIAGRAM & SCHEDULES, ELECTRICAL DETAILS



# PROJECT SCHEDULE

	2023		2024	Jan	Feb	Mar	Apr	May	Jun	Jul	Aug	Sep	Oct	Nov	Dec	2025	2025		
Concept	Report submitted Mar '24																		
Design Kickoff									5/22/24										
30% Submittal									8/15/24										
65% Submittal												10/9/24							
Permit Set Submittal														December					
Review Process																2 months			
Bidding																	2 months		
Construction																		Start Spring 2025	

COST ESTIMATE SUMMARY	
Super Structure, Exterior Enclosure, and Finishes	\$1,278,168
Data, Electrical, Plumbing and Security Camera Systems	\$456,310
Furniture Allowance	\$182,050
General Conditions, Design Contingency and Contractor Profit	\$632,454
<b>TOTAL:</b>	<b>\$2,548,982</b>