



*The Leader In Addiction Treatment*

Transforming Care  
& Strengthening  
Our Community



## WELCOME TO JANUS

# OUR MISSION

---

*“To provide supportive, hope-inspiring and successful substance use disorder treatment services in a professional and compassionate environment while assisting individuals and families on their journey toward wellness and recovery.”*





# JANUS' ORGANIZATIONAL HISTORY

---



1976

Janus was founded by physician Dr. Robert G. O'Brien, who introduced a highly effective approach for treating alcoholism in a social model setting.

1981

Janus becomes a private nonprofit organization and begins the journey to expand and improve SUD programs.

TODAY

Janus serves over 5,000+ clients and their families each year, offering the full continuum of care for substance use disorders.





# Introduction to Janus of Santa Cruz Services

Program	Capacity
Withdrawal Management Residential	40 Beds
Perinatal Residential	10 Beds
Sobering Center	10 Beds
Recovery Residences	3 Residences (26 Beds Total)
Sober Living Homes	2 Homes (20 Beds Total)
Opioid Treatment Programs & Medication Assisted Treatment	775 Slots
Intensive Outpatient	24 Slots
Enhanced Case Management & Outreach	150 Slots
DUI Program First & Multiple Offender Program	150 Slots
Probation Service Center	Assessment & Placement Into Care

## Who We Are

- The largest Substance Use Disorder provider in Santa Cruz County
- Serving 5,000+ clients annually across a full continuum of care



## FULL CONTINUUM OF CARE

Comprehensive services  
for substance use  
disorder treatment and  
recovery

# Expanding Our Impact

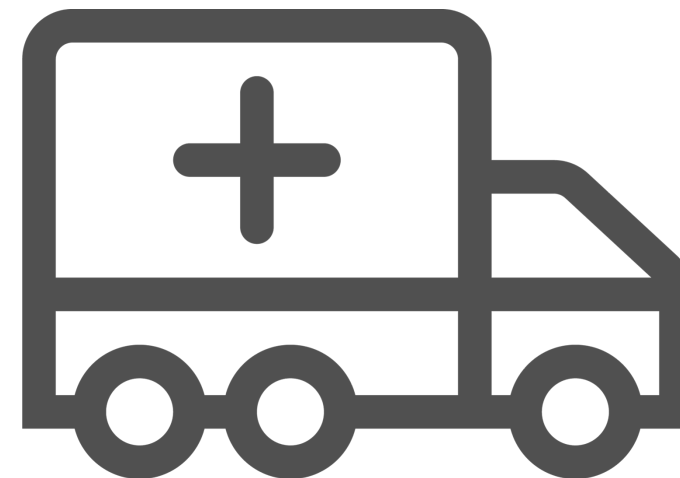
Janus is expanding its services to include a dedicated Women's and Children's Program and launching Mobile Treatment options. Janus is committed to addressing the diverse needs of individuals and families impacted by Substance Use Disorders in Santa Cruz County

## 25-BED STATE-OF-THE-ART WOMEN'S AND CHILDREN'S PROGRAM



Offering specialized, family-focused substance use disorder treatment for women and their children

## LAUNCH OF MOBILE OPIOID TREATMENT PROGRAMS



4 Mobile Clinics expanding access to Opioid Treatment Programs and Medication Assisted Treatment in the community



# Services in Watsonville

- 230 slots Opioid Treatment Program at 284 Pennsylvania established in 2017.
- 4 bed Women's Recovery Residence at Beach Street established in 2022.
- Construction in Progress- 150 Pennsylvania.
- 25 bed Women and Children's facility serving high risk pregnant and parenting women with children up to the age of 12. Started August 2024.
- Construction in Progress- 1 mobile opioid treatment van, 1 mobile counseling & outreach van.





# What is The Janus Regional Health Hub

120

Bed Residential  
Treatment Facility



10

Bed Sobering Center



230 Opioid Treatment Program/ Medication  
Assisted Treatment Slots



120 Day Treatment, Intensive Outpatient &  
Outpatient slots



# Counties in the Hub



- Santa Cruz County- largest Substance Use Disorder provider in the county.
- San Benito County- we have been contracted for services the past 3 years.
- Monterey County- not currently contracted.
- San Mateo County- we have been contracted for services for 2 years.
- Santa Clara County- currently in contract negotiations.



# Features of the Janus Health Hub to Protect Local Interests

- Sobering Center will be open 24/7 for walk in care and local law enforcement drop offs to decrease travel time to Santa Cruz Sobering Center.
- Sobering Center can have a client for 23 hours and 59 min, so is able to connect directly with other levels of care on or off site for direct transitions and admissions.
- The Hub will maintain 24/7 on-site staffing, ensuring clients are monitored, supported, and safe.
- Facility perimeter will be a secured, closed campus with 24/7 security and surveillance.
- Specialized services for underserved populations- language specific services, LGBTQIA+, veterans and transitional age youth.

# Sobering Center First Year Highlights

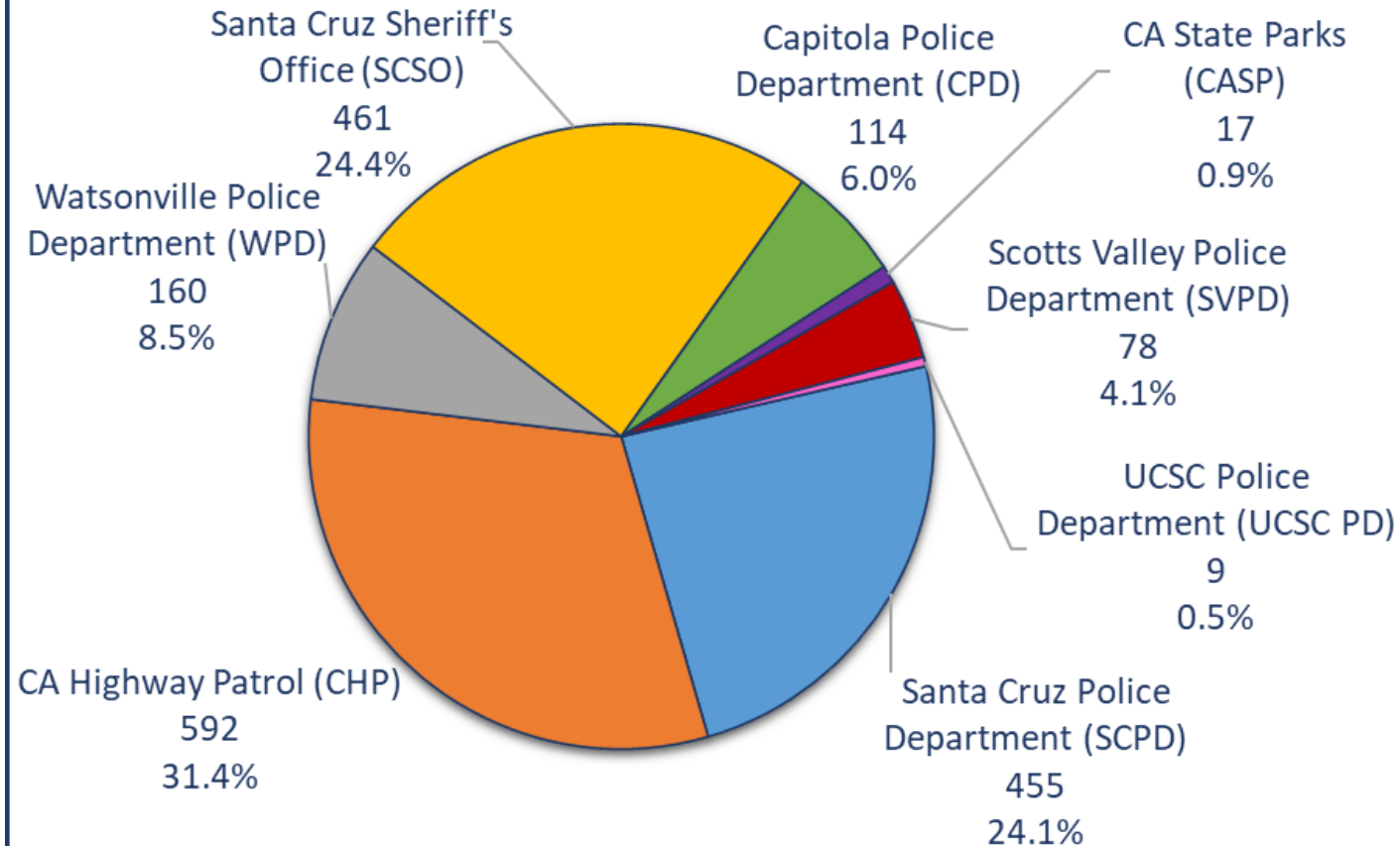
## Summary Census

2,170 visits (Daily Avg: 6)  
1,822 unique visits  
1,592 admissions

## Client County of Residence

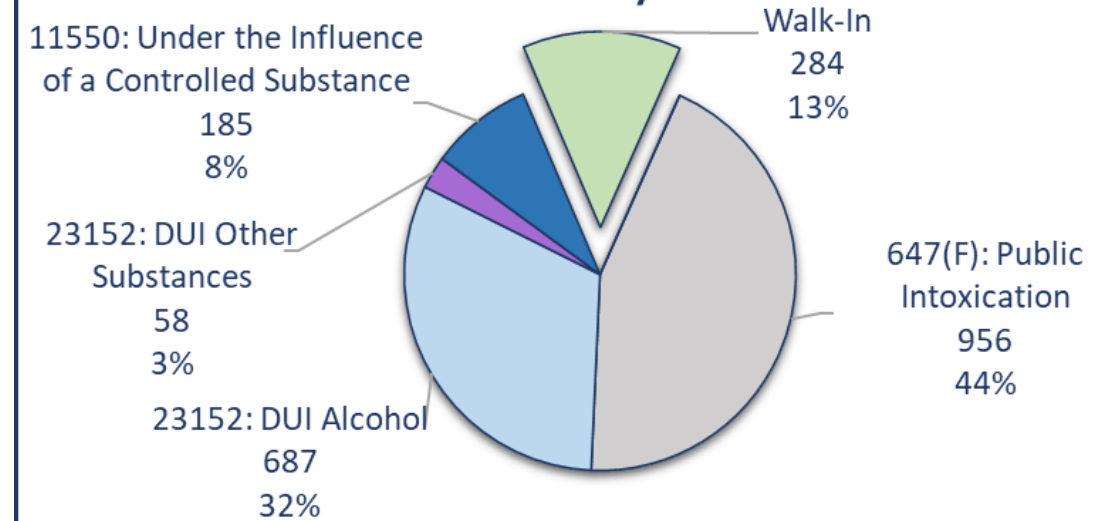
83% Local  
17% Out of County

## Total Admissions by Agency

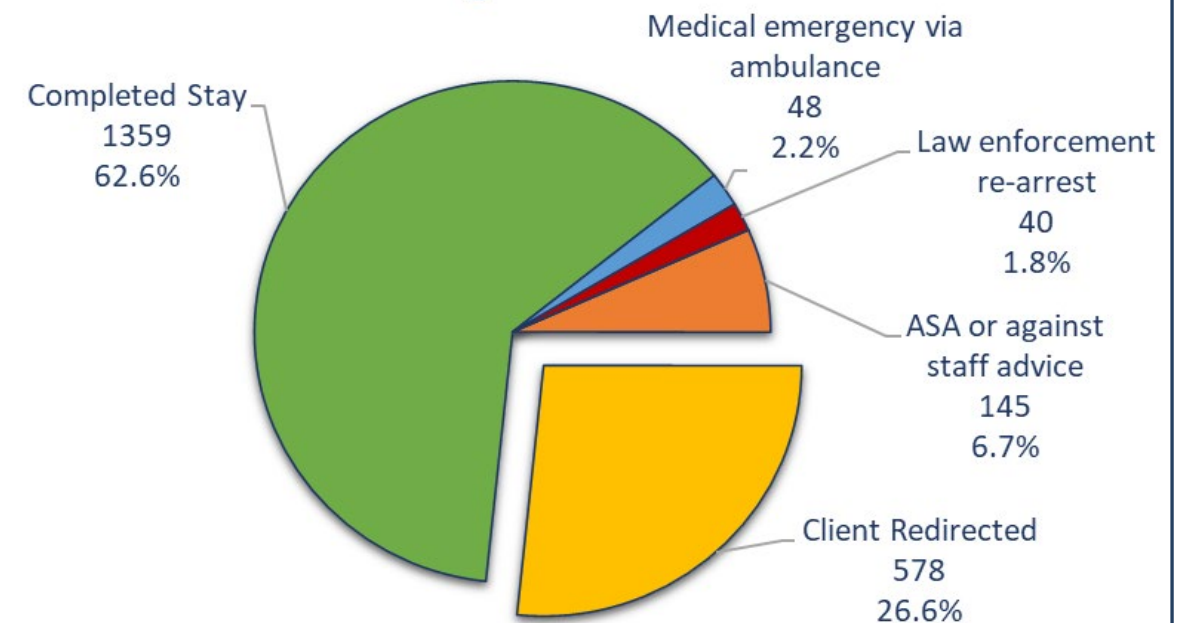


Average Officer Time at Sobering Center  
8.4 minutes

## Admissions by Offense



## Discharge Rationale

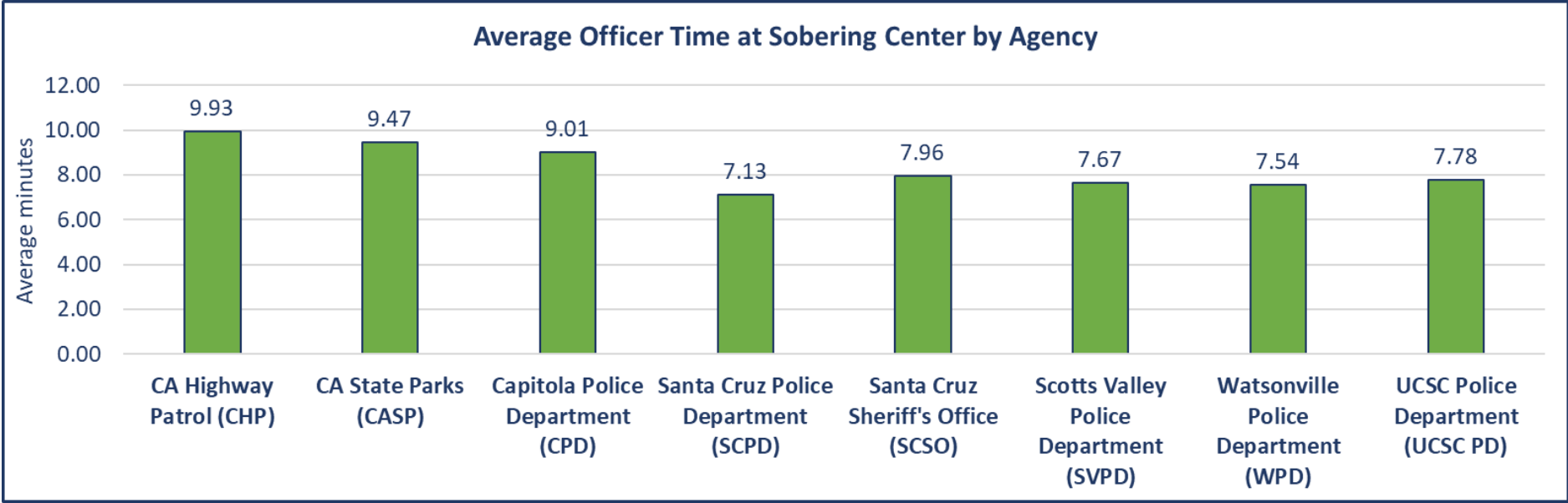
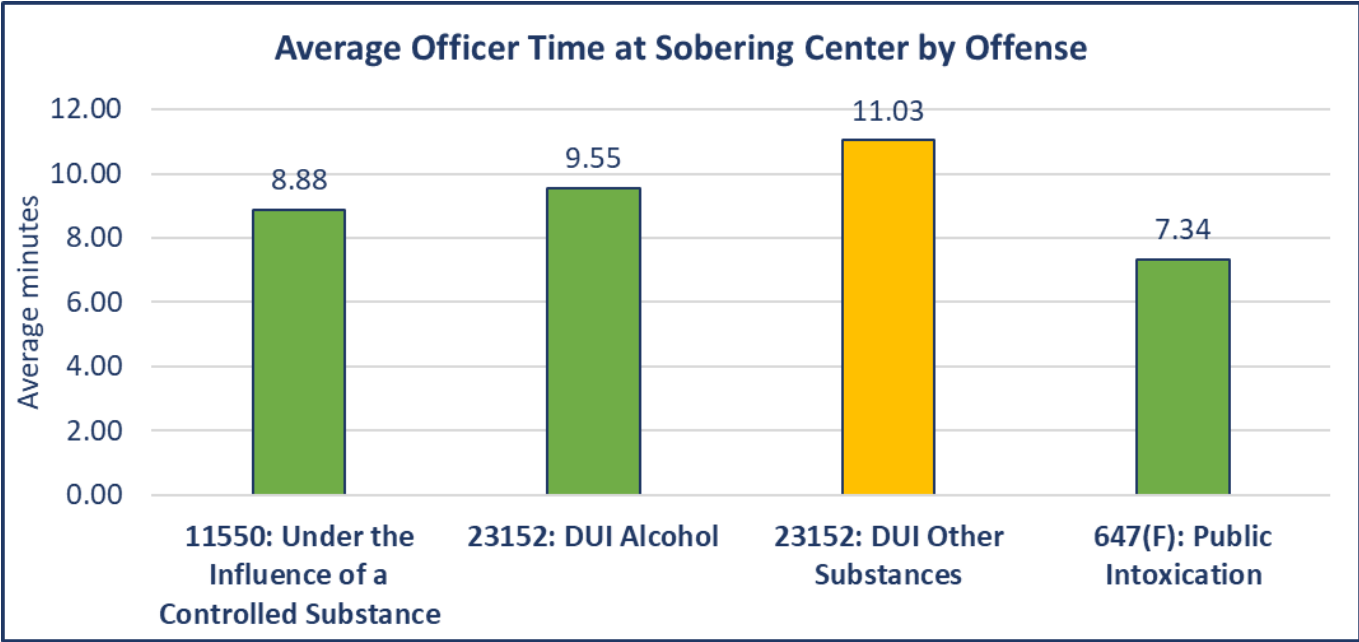






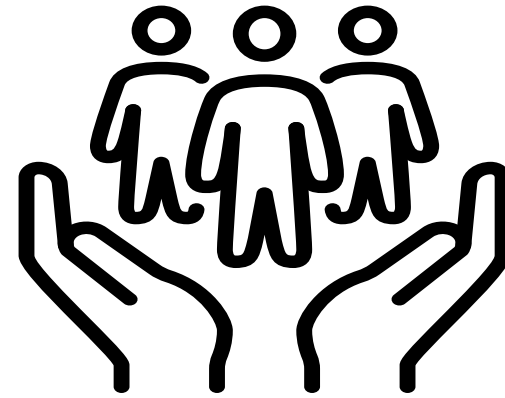
# Average Officer Time by Offense & Agency

Average Officer Time at Sobering Center  
8.4 minutes





# Community Support Collaborations



# Partnerships

WATSONVILLE  
COMMUNITY HOSPITAL  
FOUNDATION



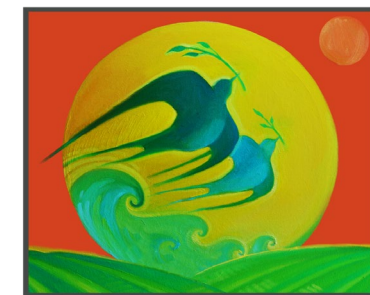
- Partnerships and contracts with local Community Based Organizations to provide services in the hub.
- Janus will establish a Community Advisory Committee made up of Watsonville residents, business owners, and city leaders to provide guidance and oversight.
- We will create an on-site neighborhood liaison to address community concerns promptly.
- An integrated Behavioral Health team will be on-site to address Mental Health concerns.
- Partnering with Director of Housing for Health to develop a pathway to transitional environments.
- Partnering with County Mental Health for psychiatric support.



CENTER OF EXCELLENCE

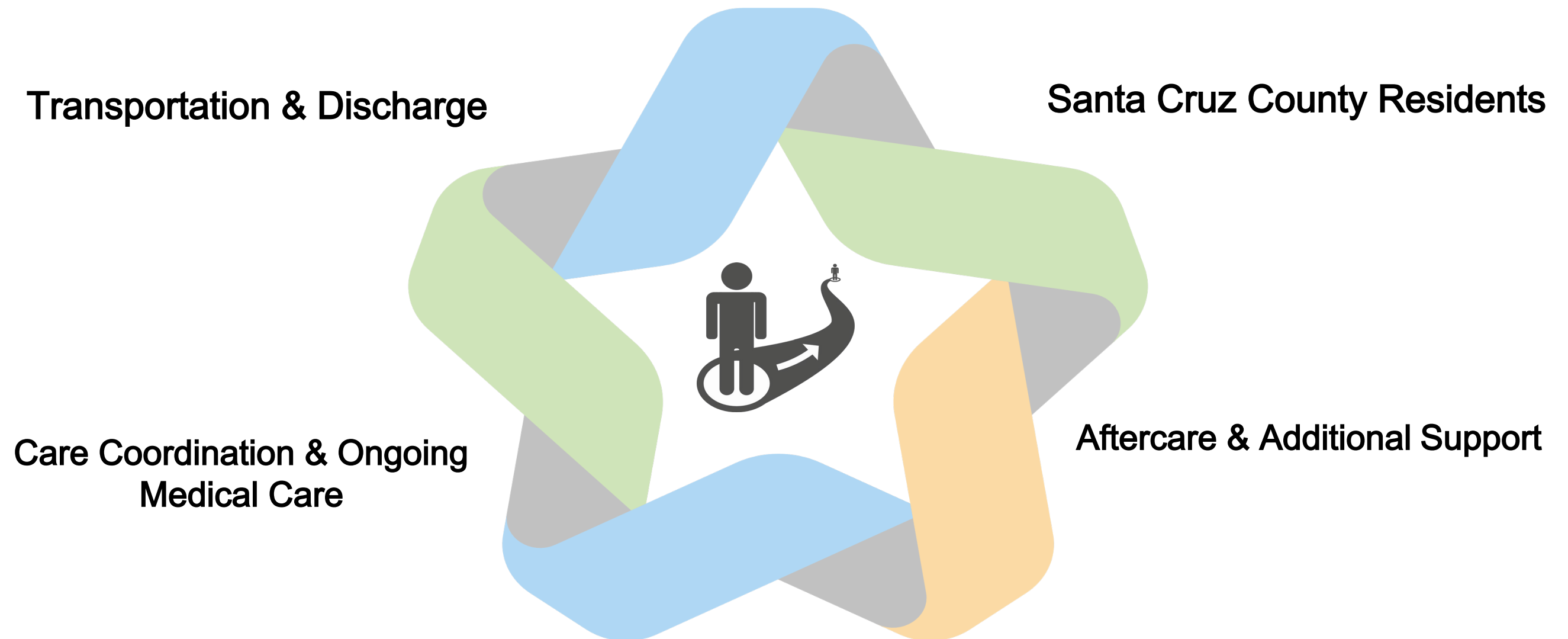


PUENTES DE LA COMUNIDAD





# Discharge Planning & Process

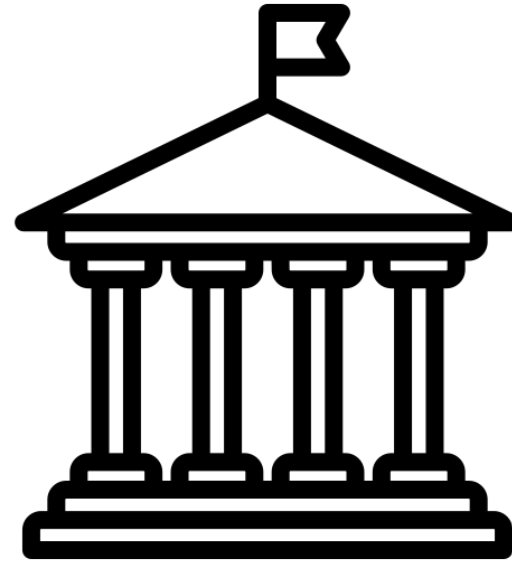


# Funding Sources & Needs



## Regional Funding Highlights

- Central Coast (Monterey, San Benito, San Luis Obispo, Santa Barbara, Santa Cruz)
- Bay Area (Alameda, Contra Costa, Marin, Napa, SF, San Mateo, Santa Clara, Solano, Sonoma)
- **TOTAL \$329.8M**



## New Bond Funding

- Bond BHCIP Round 1: Launch Ready (July 2024): Up to \$3.3B
- Bond BHCIP Round 2: Unmet Needs (May 2025): Up to \$1.1B
- Janus awarded in Round 4: Children & Youth \$5.6 mil for 150 Pennsylvania
- Janus applied for Bond 1 in the amount of \$50 million.



- Estimated to add 6,800 residential treatment beds and 26,700 outpatient slots statewide.
- Continues to address a **6,000+ behavioral health bed shortfall** contributing to unmet needs in homelessness and mental illness/substance use disorders.





831.278.7906



amber\_williams@janussc.org



www.janussc.org



THANK YOU