

# Electric Vehicle Charger Parking Ordinance

Tuesday, May 13, 2025

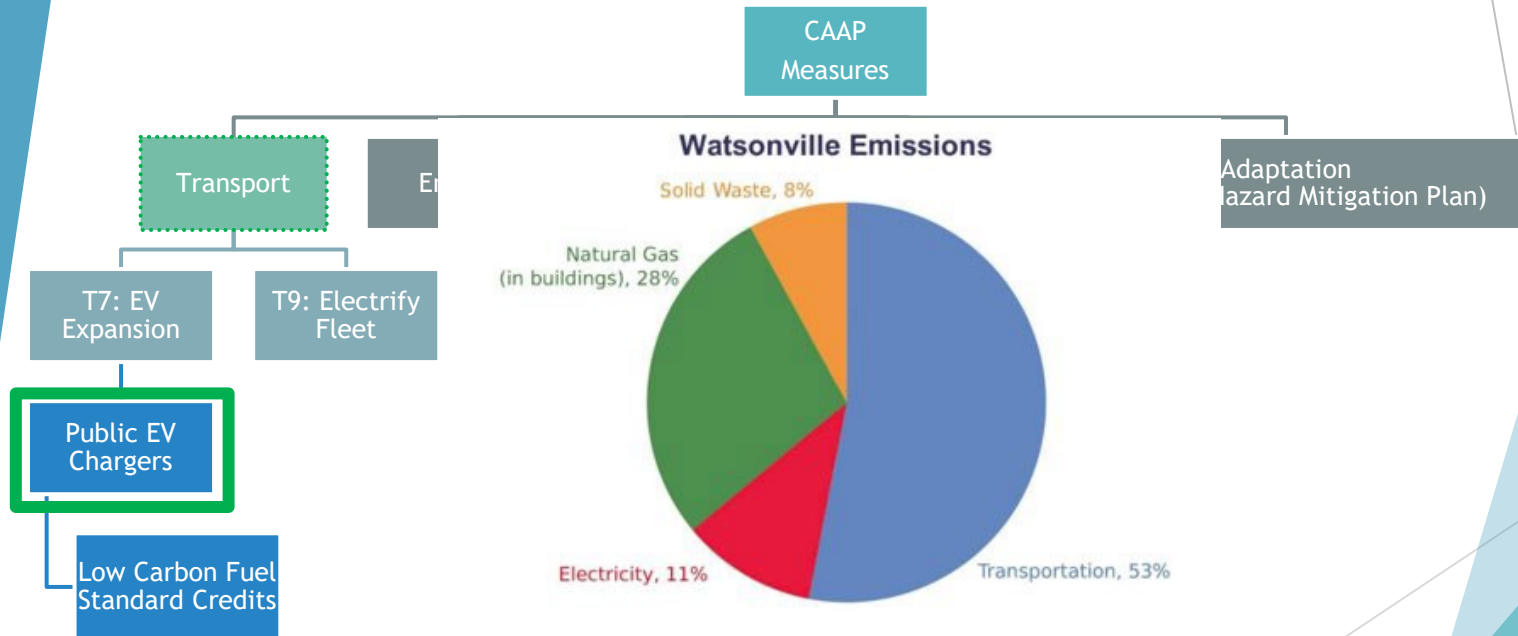
Presented by Toto Vu-Duc, Environmental Projects Manager



**Watsonville**  
CALIFORNIA

1. CAAP (Climate Action & Adaptation Plan)
2. Watsonville Public Charger Network
3. Ordinance & Enforcement
4. Impacts
5. Questions

# Climate Action & Adaptation Plan





# Watsonville Public EV Charger Network

1. Airport
2. City Hall
3. Civic Plaza
4. Romo Park (Main opposite Downtown Plaza)



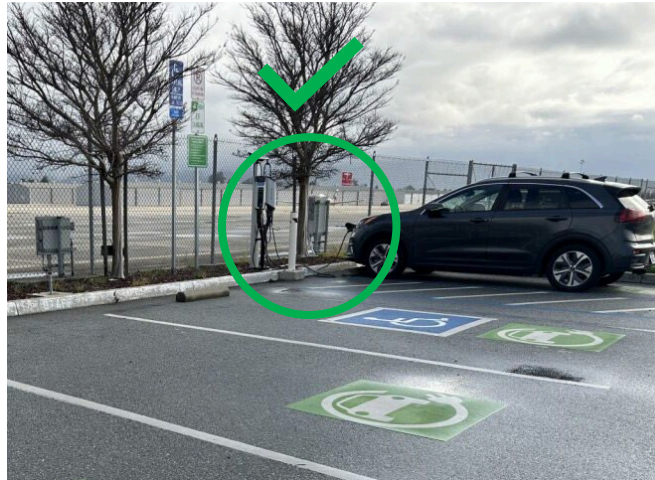
# Enforcement

Not Charging



At City Hall (250 Main)

Actively Charging



At Airport (100 Aviation)

- + ☐ CHARTER OF THE CITY OF WATSON
- + ☐ Title 1 GENERAL PROVISIONS
- + ☐ Title 2 ADMINISTRATION
- + ☐ Title 3 FINANCE
- + ☐ Title 4 PUBLIC SAFETY
- + ☐ Title 5 PUBLIC WELFARE, MORALS, AND CONDUCT
- + ☐ Title 6 SANITATION AND HEALTH
- + ☐ Title 7 PUBLIC WORKS
- + ☐ Title 8 BUILDING REGULATIONS
- + ☐ Title 9 PLANNING AND ZONING
- + ☐ Title 10 PUBLIC PARKS, PLAYGROUNDS, AND RECREATIONAL FACILITIES
- + ☐ Title 11 MOBILE HOMES AND PARKS
- + ☐ Title 12 LOCAL IMPROVEMENT PROCEDURE CODE
- + ☐ Title 13 SUBDIVISIONS AND MAPS
- + ☐ Title 14 ZONING

## Title 4 PUBLIC SAFETY

### Chapters:

- 1 Bicycles
- 2 Emergency and Emergency Services
- 3 Fire Prevention
- 4 Off-Street Parking
- 5 Traffic
- 6 Vehicle Off-Street Parking Districts
- 7 Weapons
- 8 Police Reserve
- 9 Security Alarm System
- 10 Interstate Traffic
- 11 Vehicle Towing
- 12 Enforcement
- 13 Military Equipment

# Ordinance

### Article 10. Stopping, Standing, and Parking

- 4-5.1001 Application of regulations.
- 4-5.1002 Parkways.
- 4-5.1003 Removal of parked and abandoned vehicles.
- 4-5.1004 Parking for certain purposes prohibited.
- 4-5.1005 Parallel parking on one-way streets.
- 4-5.1006 Parking in business districts: Hours restricted.
- 4-5.1007 Night parking.
- 4-5.1008 Parallel parking.
- 4-5.1009 Angle parking.
- 4-5.1010 Signs and markings indicating angle parking.
- 4-5.1011 Loading and unloading at angles to curbs: Permit required.
- 4-5.1012 Parking adjacent to schools.
- 4-5.1013 Parking on narrow streets.
- 4-5.1014 Prohibited stopping and parking.
- 4-5.1015 Parking by peddlers, vendors, and mobile caterers.
- 4-5.1016 Emergency parking signs.
- 4-5.1017 Display of warning devices from disabled commercial vehicles.
- 4-5.1018 Parking space markings.
- 4-5.1019 Parking for vehicles of handicapped persons.
- 4-5.1020 Removal of unauthorized vehicles from designated parking areas for handicapped persons.



# Impacts

- ▶ Ensures designated spaces used for purpose
- ▶ Diversifies service to parking users while retaining parking lot capacity
- ▶ Addresses access barriers to EVs for Watsonville residents and workers



# ► Questions

