



# Watsonville

## PARKS & COMMUNITY SERVICES

We make Watsonville an ideal place to live, work & play.

# Ramsay Park Renaissance

Planning Commission Meeting No.1

January 18, 2022



**VERDE DESIGN**  
LANDSCAPE ARCHITECTURE  
CIVIL ENGINEERING  
SPORT PLANNING & DESIGN

# Agenda

- **Welcome**
  - Project Introduction
- **Project Milestones**
  - Process Schedule
- **The Park Site**
  - Site Historic Background
  - Approved Master Plan
- **Community Workshop #1 Survey Results**
- **Project Program**
  - Overall Site Plan
  - Focus Areas
- **Play Options**
- **Next Steps**





# Process Schedule

## • Project Milestones

- Start 30% Construction Package
- Community Workshop No. 1
- Parks and Recreation Meeting No. 1
- Council Presentation No. 1
- Planning Commission No. 1
- 65% Construction Package
- Community Workshop No. 2
- PRC Meeting No. 2
- Planning Commission No. 1
- 95% Construction Package
- Community Workshop No. 3
- PRC Meeting No. 3
- Council Presentation No. 3
- Final Documents
- Bidding
- Construction Start

September 2021

November 2021

December 6

January 2022

January 2022 March

2022 March 2022

April 2022

June 2022

June 2022

July 2022

September 2022

October 2022

Spring 2023



# Ramsay Park

Approved Master Plan - April 2019

## CONCEPT LEGEND

- ① FULL SIZE SOCCER FIELD
- ② STORAGE BUILDING
- ③ RENOVATED FAMILY CENTER
- ④ FAMILY CENTER / GYM BUILDING EXPANSION
- ⑤ EXISTING TRAIL
- ⑥ PROPOSED TRAIL
- ⑦ INDIVIDUAL PICNIC AREA
- ⑧ GROUP PICNIC AREA
- ⑨ SOFTBALL AND SOCCER MULTI-USE FIELD
- ⑩ DOG PARK
- ⑪ PUMP TRACK
- ⑫ PLAY AREA
- ⑬ RELOCATED AND IMPROVED SLIDE
- ⑭ SPECTATOR AREA
- ⑮ SERVICE PARKING SPACE
- ⑯ AMPHITHEATER/ OUTDOOR CLASSROOM
- ⑰ NATURE CENTER
- ⑱ WETLAND OVERLOOK DECK
- ⑲ FEMA FLOOD ZONE
- ⑳ RENOVATED RESTROOM
- ㉑ EXERCISE STATION
- ㉒ MODIFIED PARKING LOT
- ㉓ SCORER'S BOOTH
- ㉔ NEW PARKING ON MAIN STREET
- ㉕ EXISTING RESTROOM
- ㉖ BASKETBALL COURT
- ART FEATURE

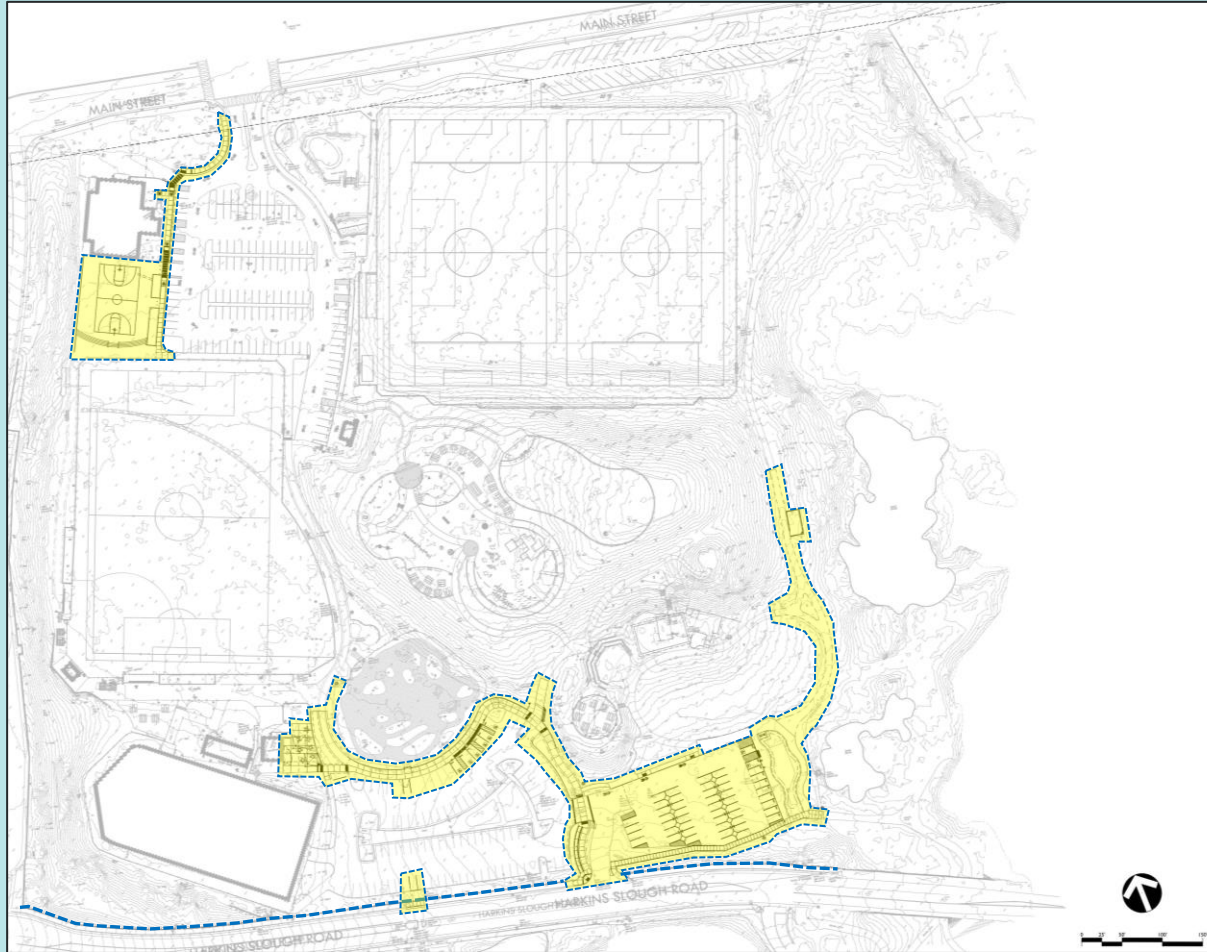
Base Bid  
Contract  
Work

Bid  
Alternate  
Work



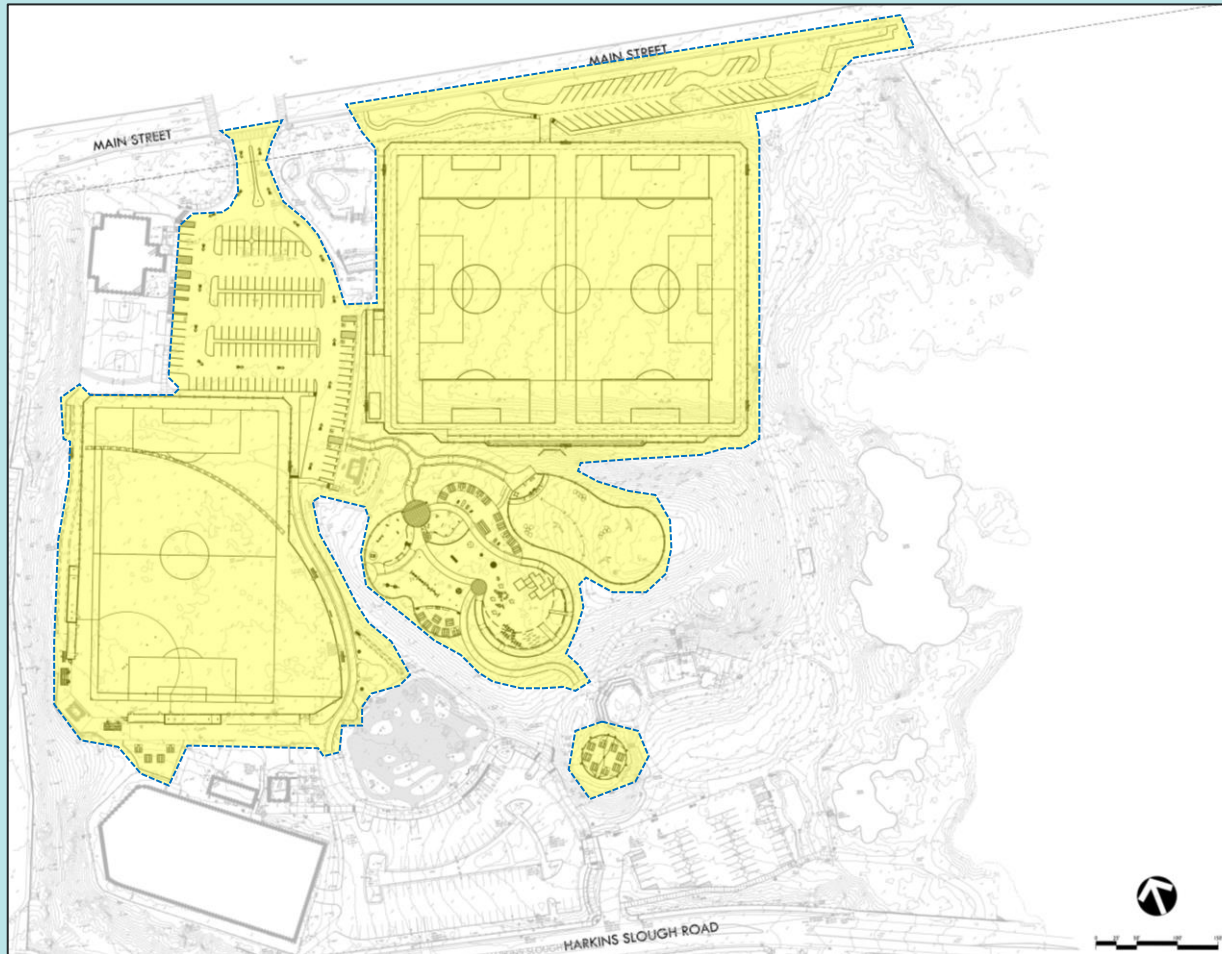


# Ramsay Park Phase I



## Watsonville Slough Connector Trail Project

# Ramsay Park Phase II



## Ramsay Park Renaissance Project

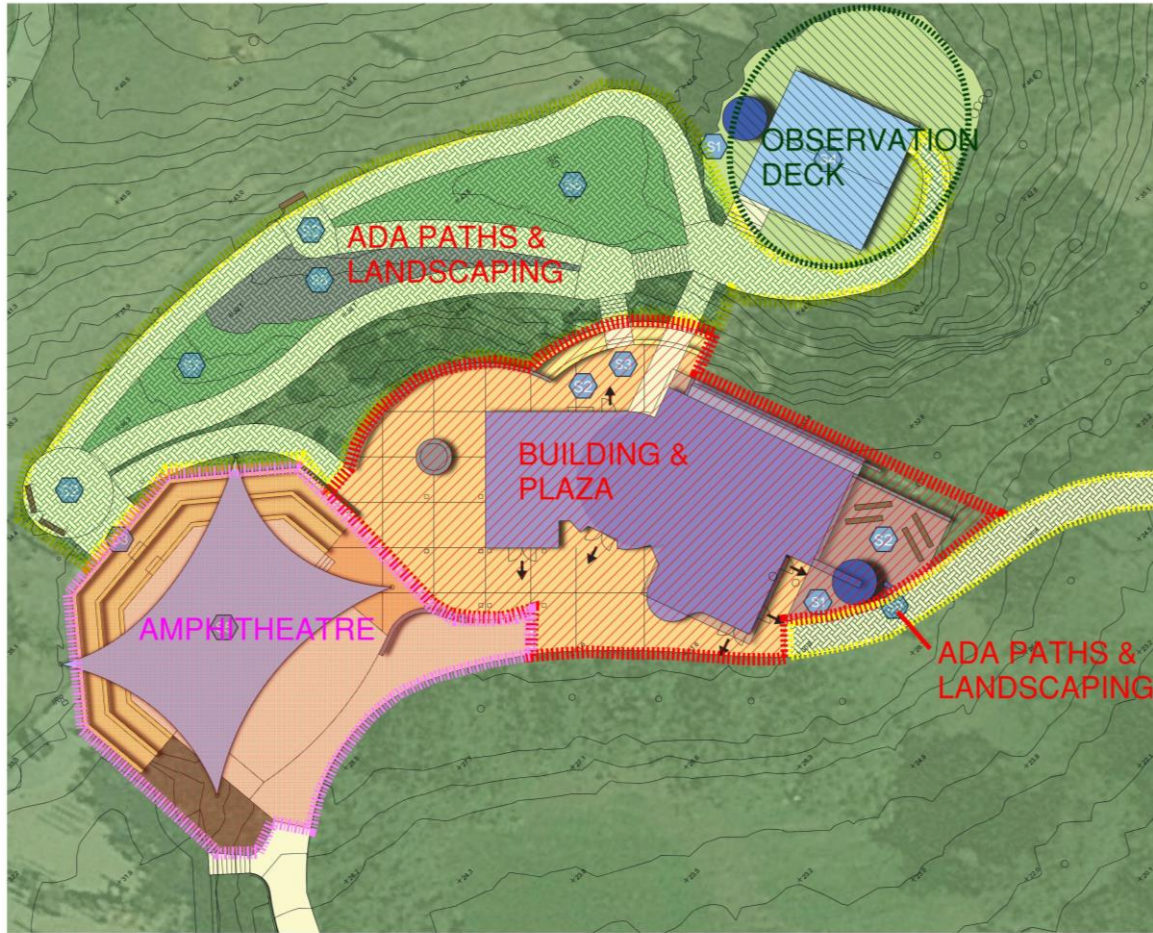
# Ramsay Park Phase III



## Ramsay Park Exploration Center



# Exploration Center Concept Design



## SITE LEGEND

- S1 RAINWATER CATCHMENT TANK
- S2 DEMONSTRATION SPACE
- S3 OUTDOOR AMPHITHEATRE
- S4 DECK AREA W/ OBSERVATION
- S5 FABRIC SHADE STRUCTURE
- S6 NATIVE PLANT GARDEN
- S7 TERRACED FOOD GARDEN
- S8 ROCK GARDEN
- S9 SIGNAGE





# Ramsay Park

(E) Family Center

Basketball Court

(E) Skate Park

Multi Use Fields

(E) Soccer Central

Sotomayor Fields

Dog Play Area

Children's Play Area

(E) Pump Track

Future Exploration Center

South Parking Lot

Stormwater Treatment





# Sotomayor Fields



- Natural Turf
- Adult Soccer Striping
- Youth Soccer Striping
- Football Striping
- Hillside Spectator Seating



WRP - SOTOMAYOR FIELDS



# Multi-use Fields



- Synthetic Turf
- Adult Soccer Striping (white)
- Lacrosse Striping (blue)
- Rugby Striping (red)
- Softball with 300' outfield



WRP — MULTI-USE FIELDS

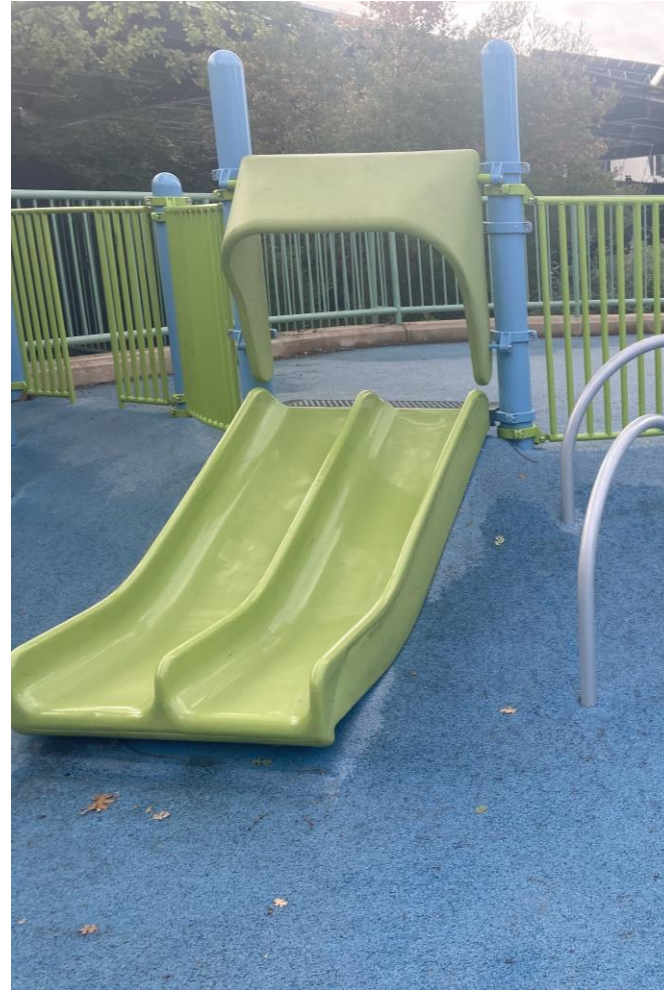
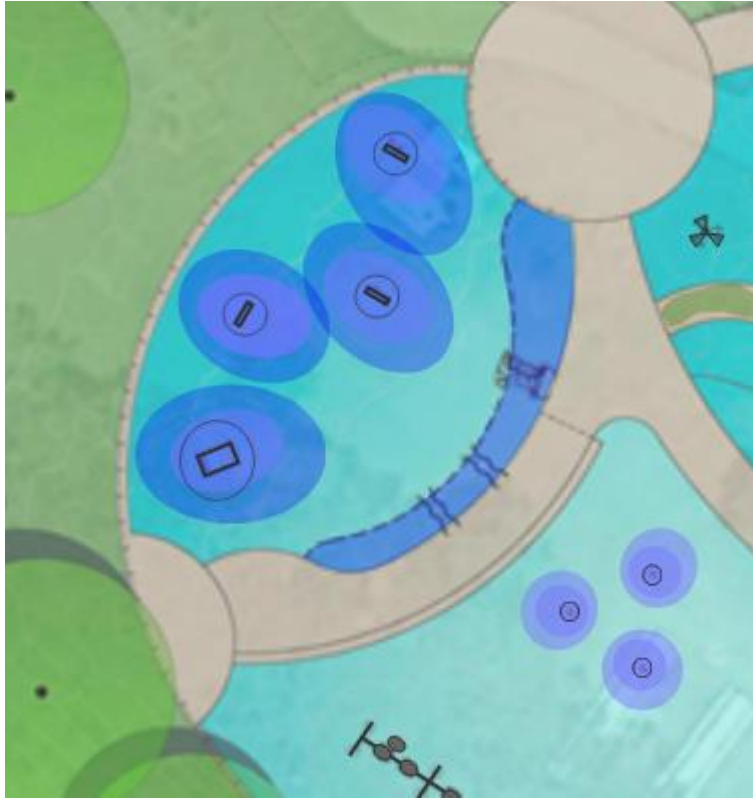


# Play Areas





# 2-5 Play Area





# Sensory Play Area





# Swing and Sway Zone



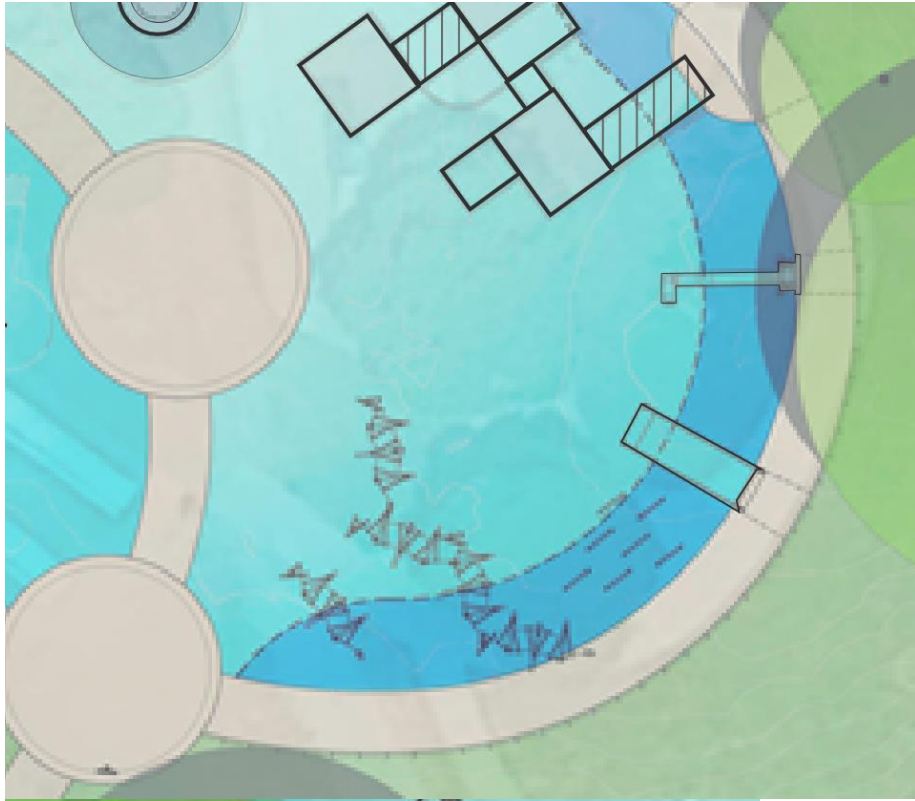


# Spin and Climb Zone



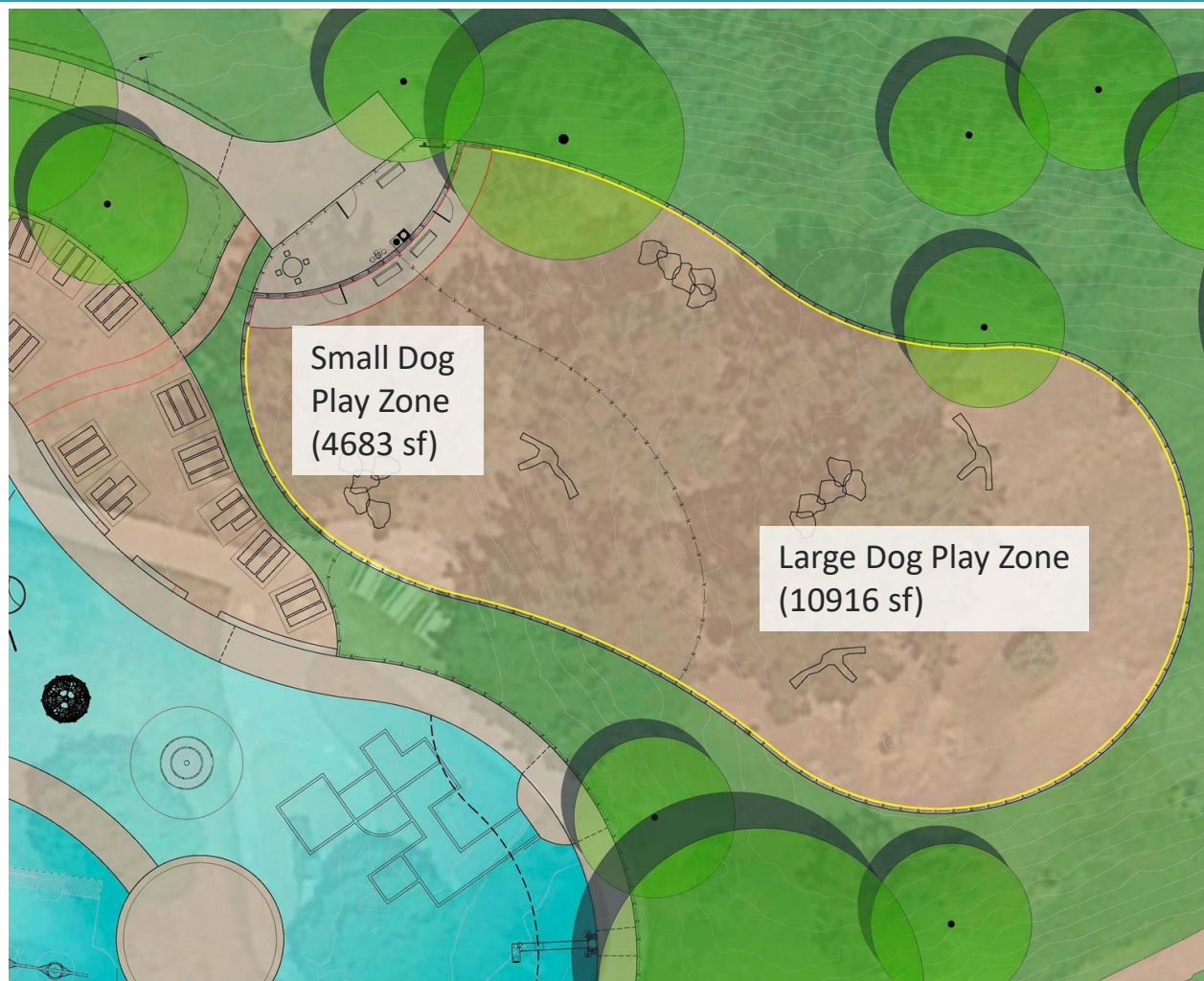


# Climb and Slide Zone





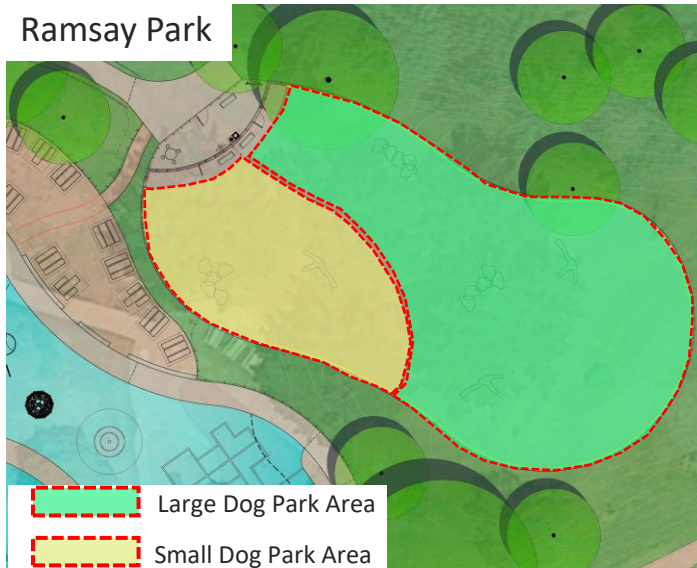
# Dog Park





# Existing Dog Parks

Ramsay Park



Franich Dog Park



Polo Grounds Dog Park



Chanticleer Park



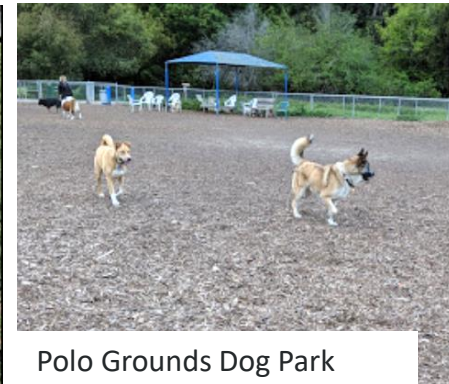
Morgan Hill Community Park



Park Name	Location	Total Square Footage Large Dog Area / Small Dog Area
Ramsay Park	Watsonville	Total 15,599 10,916 SF / 4,683 SF
Franich Dog Park	Watsonville	Total 18,500 SF 14,000 SF / 4,500 SF
Polo Ground Dog Park	Aptos	Total 39,500 SF 34,000 SF / 5,500 SF
Chanticleer Park	Santa Cruz	Total 14,000 SF 8,000 SF / 5,500 SF
Morgan Hill Community Park	Morgan Hill	Total 15,000 SF 9,000 SF / 6,000 SF



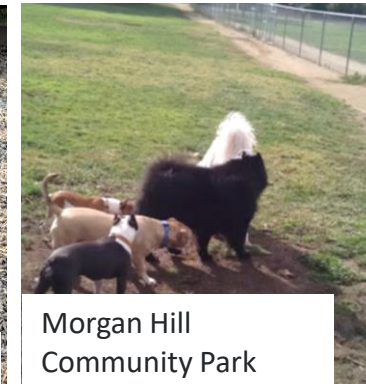
Franich Dog Park



Polo Grounds Dog Park



Chanticleer Park



Morgan Hill Community Park



# Community Workshop No.1 Survey Results

## Virtual Workshop

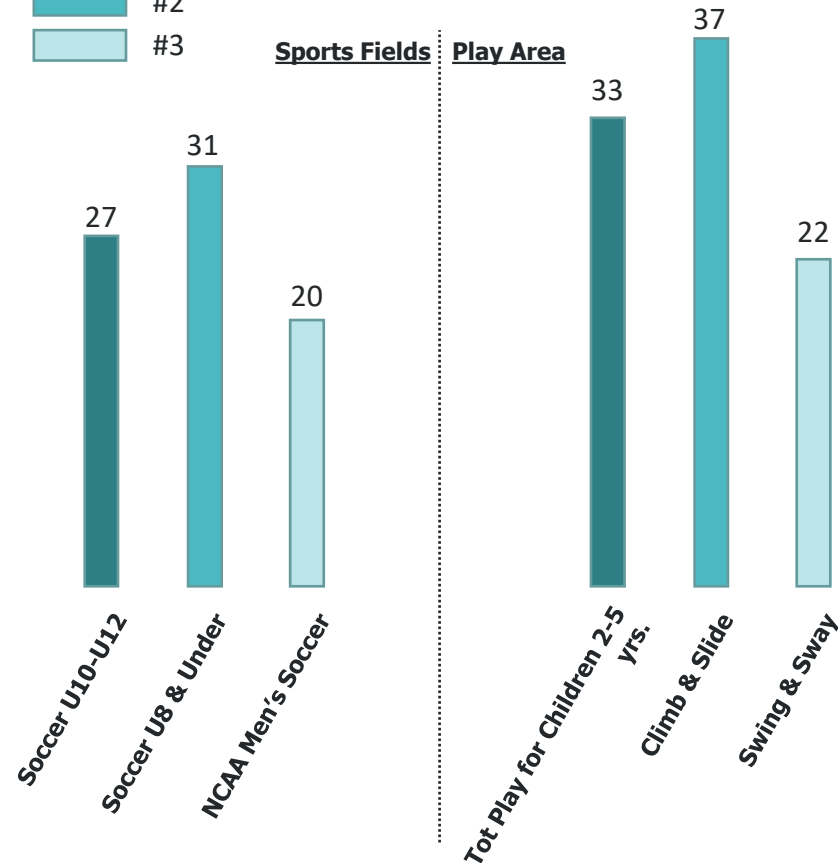
on-line participants **27**

Survey participants **102**

As a child's caregiver at the play are which of the following features are you most interested in?

slide  
climbing  
space swing  
ropes  
sensory  
natural  
big  
thing  
wheel  
climb  
elements

## Top Three Categories



## General Comments

### Multi Use Field

"...multi field is a good idea...soccer is really popular & we still get a softball field"

"Watsonville needs a world class baseball/ softball facility to help our youth compete without having to travel"

### Sotomayor Soccer Field

"Access to being able to move goals for public would be nice"

"Hopefully soccer fields can host regional youth tournaments"

### Dog Park

"It is great that there will be a designated park for dogs that is more central to the city"

"Thank you so much for including a large and small dog park in the design. It will be a great place for dogs and people to meet"

### Play + Picnic Areas

"Having an updated playground will encourage community activities"

"The sensory garden is a great feature"

"I've always loved Ramsay especially the big slide don't get rid of it!"



# Process Schedule

- Project Milestones

- Start 30% Construction Package
- Community Workshop No. 1
- Parks and Recreation Meeting No. 1
- Council Presentation No. 1
- Planning Commission No. 1

- 65% Construction Package
- Community Workshop No. 2
- PRC Meeting No. 2
- Planning Commission No. 1

- 95% Construction Package
- Community Workshop No. 3
- PRC Meeting No. 3
- Council Presentation No. 3

- Final Documents
- Bidding
- Construction Start

September 2021

November 2021

December 6

January 2022

January 2022

March 2022

March 2022

April 2022

June 2022

June 2022

July 2022

September 2022

October 2022

Spring 2023







# Watsonville

## PARKS & COMMUNITY SERVICES

We make Watsonville an ideal place to live, work & play.



# Next Steps

## Ramsay Park Renaissance

- Finalize 30% Documents
- Community Workshop No. 2 in March 2022





# Watsonville

## PARKS & COMMUNITY SERVICES

We make Watsonville an ideal place to live, work & play.



# Thank You!