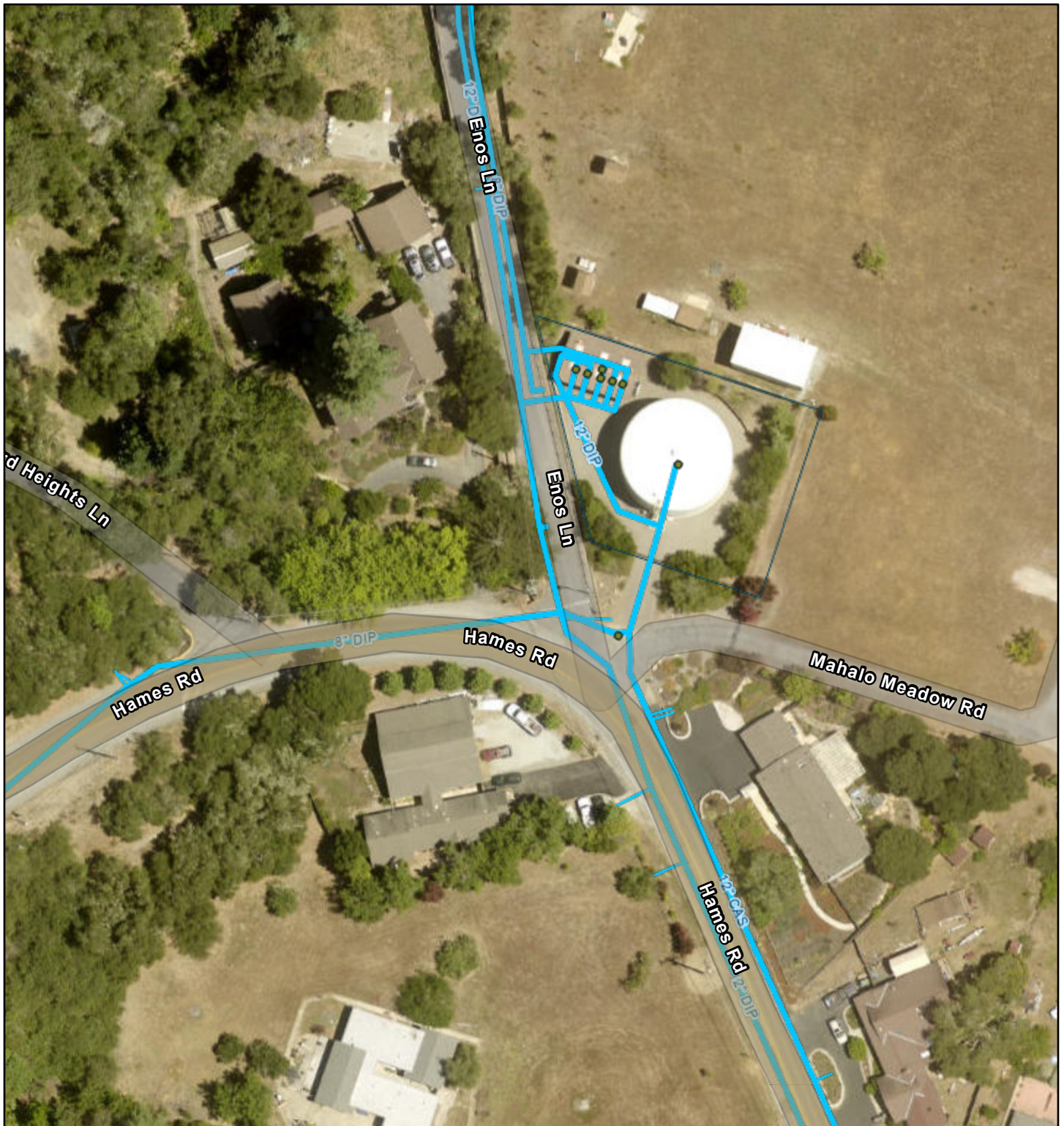
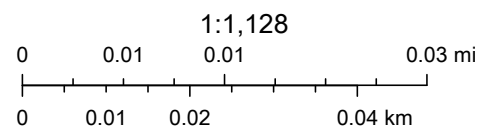


# Hames Water Reservoir Interior Coating Project WA-21-14826



10/21/2021, 11:45:52 AM

- Water Ops Sites
- Water Ops Assets
- Water Lateral Lines
- Water Mains
- Potable Water



Attachment 1

Page 1 of 1

Esri Community Maps Contributors, County of Santa Clara, Santa Cruz County, © OpenStreetMap, Microsoft, Esri, HERE, Garmin, SafeGraph, INCREMENT P, METI/NASA, USGS, Bureau of Land Management, EPA, NPS, US Census Bureau, USDA, Santa Cruz County, Maxar, Microsoft

GIS Viewer Application  
City of Watsonville, CA