



Director's *Presentation*
to Airport Advisory Committee

January 27, 2021



VIII: AMENDMENT OF THESE BY-LAWS:

- A. These BY-LAWS will be reviewed at least once every two years by this Committee which may recommend amendments.
- B. Amendments must be proposed in writing to the Chairperson at least two months in advance of the next regularly-scheduled meeting. The Chairperson will promptly communicate the proposed amendment to the membership.
- C. Proposed amendments shall be voted on at the next regularly-scheduled meeting of the Committee and approval shall require a two-thirds vote of the membership.

WATSONVILLE MUNICIPAL AIRPORT
100 AVIATION WAY • WATSONVILLE, CALIFORNIA 95076
MAIN: 831 768-3575 • FAX: 831 763-4058



June 15, 2019

Airport Tenants

RE: Airport Regulations update

Dear Tenant:

You may recall that two years ago the Municipal Airport updated the 1998 Airport Regulations. Airport regulations are an important primary compliance document and implementation is a recognized "Best Practice" by the Federal Aviation Administration (FAA).

Given our Airport Regulations serve us best when they reflect reality it is necessary for review and update over time. The City's Municipal Code allows for administrative Regulation updates.

Airport management has reviewed the 2017 Regulations and determined a number of edits are required. Although most edits are minor clarifications the list below notes the top ten edits relative to safety, service, and impact on tenants. Edits will be effective July 1, 2019.

1. Habitually Delinquent Accounts
2. Late fee percentage increased
3. Hangar Wait List due date changed
4. Cleaning fee for vacated hangars
5. Spray painting prohibited in hangars
6. Non aeronautical storage charges in Middle and End rooms
7. Non active/non-operational aircraft charges
8. Non permittee owned vehicles stored on behalf of others prohibited
9. Failure to ensure Airport has key lock/lock combination
10. Vehicular traffic traversing of Terminal transient ramp

The updated regulations are posted on www.watsonvilleairport.com, select Airport Compliance Documents. Regulations are reviewed on a biennial basis. If you have any questions, please contact us at the above phone number or via e-mail at rayvon.williams@cityofwatsonville.org.

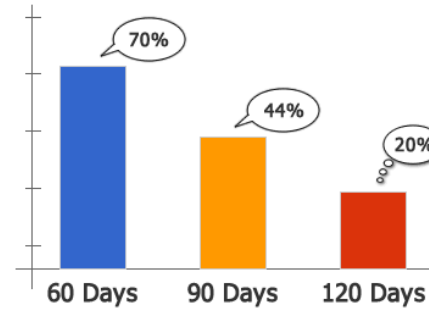
One more point of information. If you are not registered on the **Airport's Email Alert List**, please register today at www.watsonvilleairport.com. During the recent runway rehabilitation effort there were a number of tenants who never "got the word". The Alert List proved, once again, it is a great way to remain informed regarding Airport activities, but it only works if you sign up.

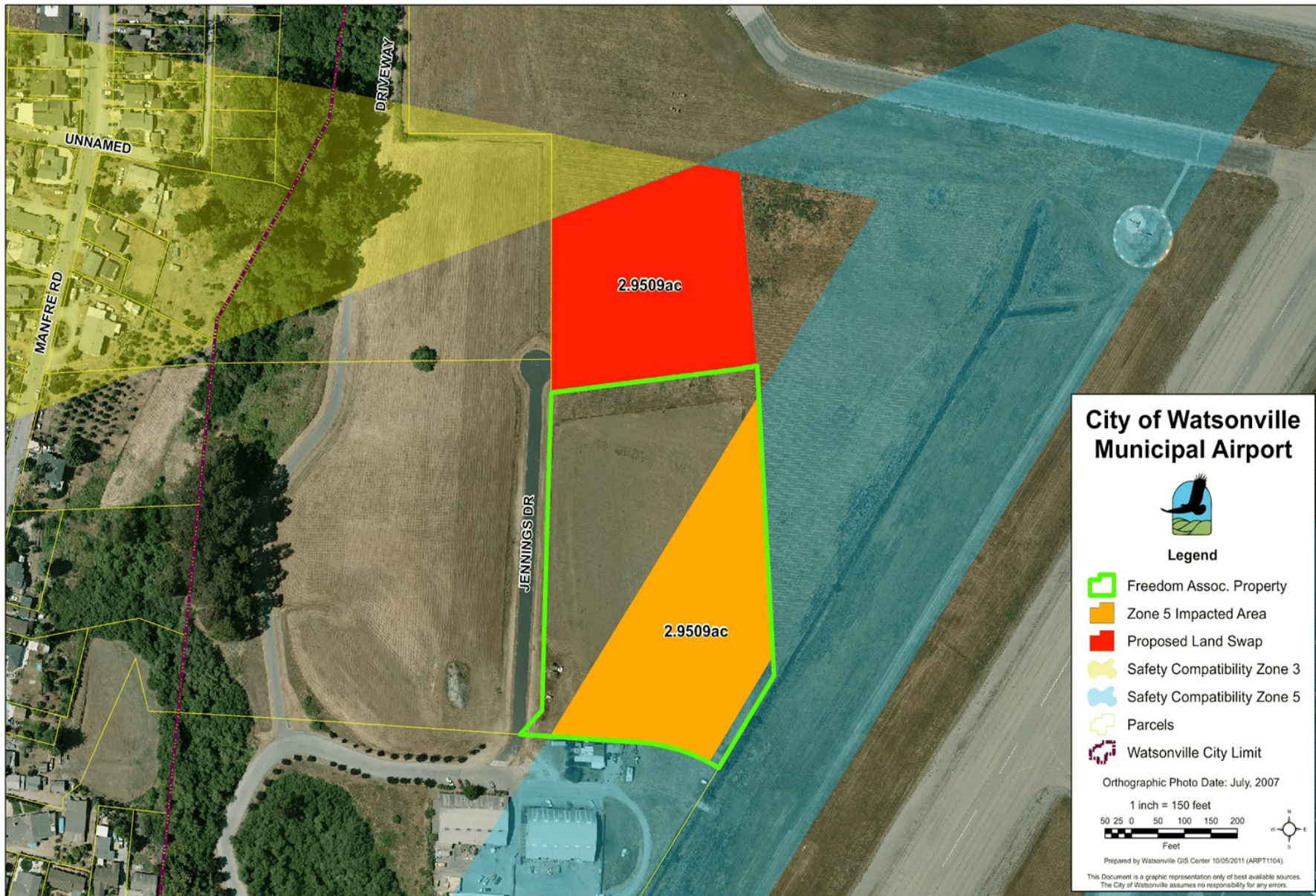
Thank you for your continued patronage and support of Watsonville Municipal Airport.

Sincerely,

Rayvon Williams
Director, Municipal Airport

Chance of Recovery
Delinquent Accounts Receivable

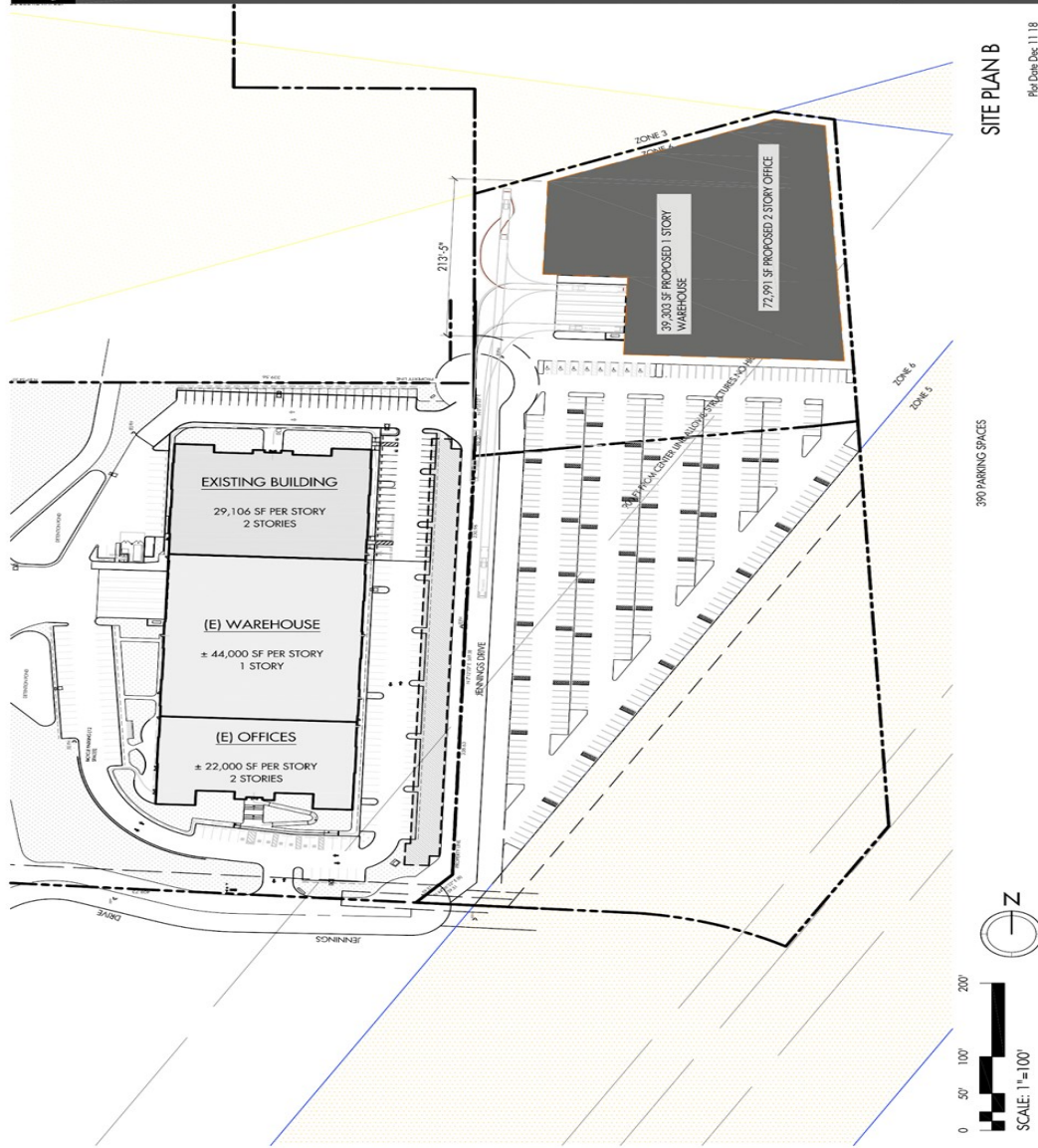




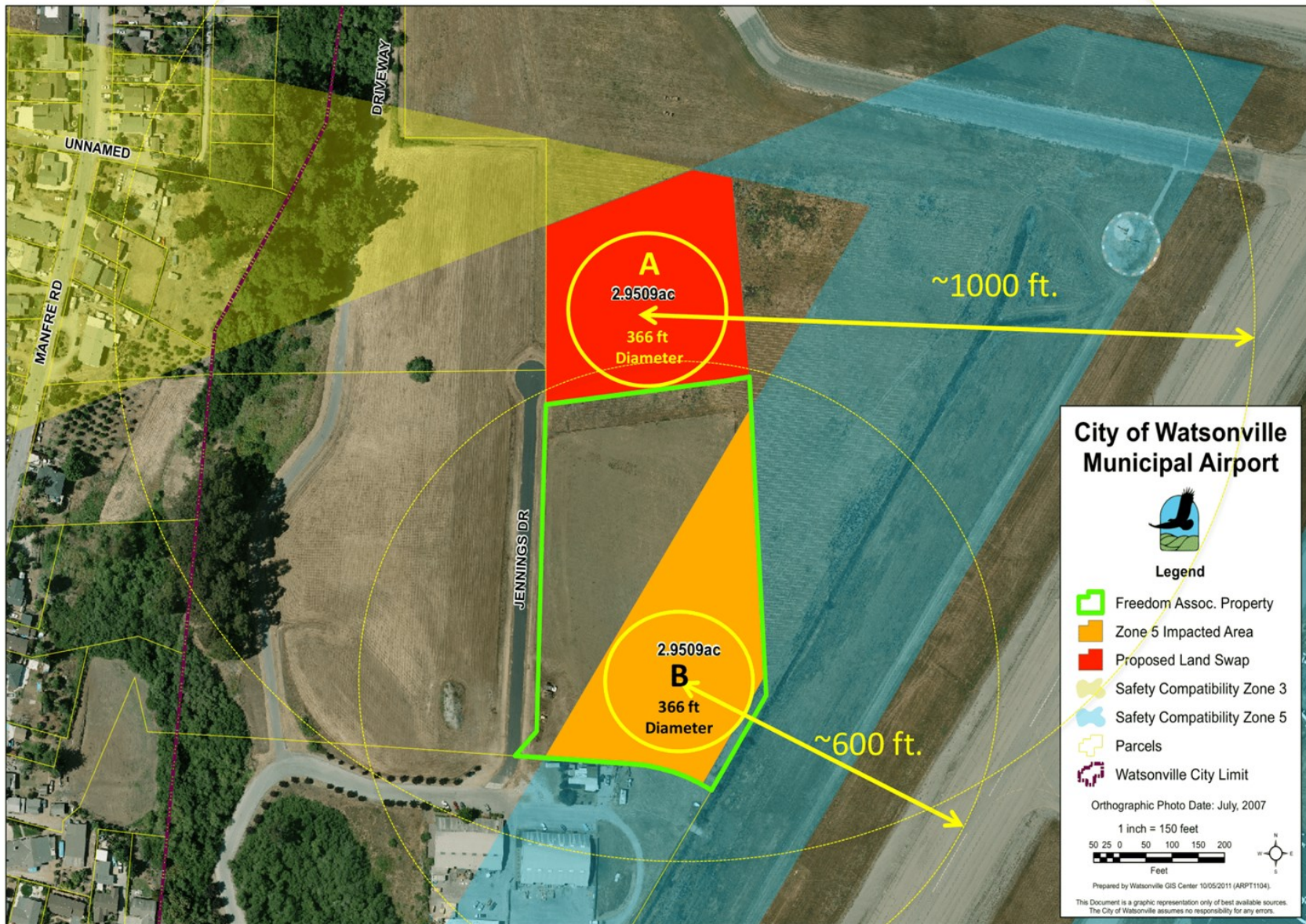
SCA

Nordic Parcels

Inspector: Corbett Architects
 431.319.4444
 1411 S. Highway 101, Suite 100
 Watsonville, CA 95076



Parachute Landing Area possible Land Swap option



Runway Visibility Zone challenges....

An unintended consequence



Advisory Committee

Date: Feb 7, 2018
From: FAA Flight Procedures
To: Watsonville Airport

Mr. Williams,

The Flight Procedures Team is in the process of creating a new RNAV departure procedure for Watsonville and we ran into an issue while evaluating the RWY 27 departure procedure.

It appears the Runway Visibility Zone is blocked on the east side of RWY 2 between RWY 2 and RWY 27 by hangars. The attached Google Earth file has the RVZ displayed in white. If the hangars are still at the locations shown in the attached file, then we need to restrict departures from RWY 27.

I will have a NOTAM issued for KWVI that says RWY 27 departures NA and will have the procedures amended accordingly.

Request that you log into the Aeronautical Chart Change website and request the following note added to the SOUTHWEST CHART SUPPLEMENT.

https://www.faa.gov/air_traffic/flight_info/aeronav/aero_data/Aero_Chart_Changes/

Aeronautical Chart Change Details

• Product Category: Supplemental Chart/Pub

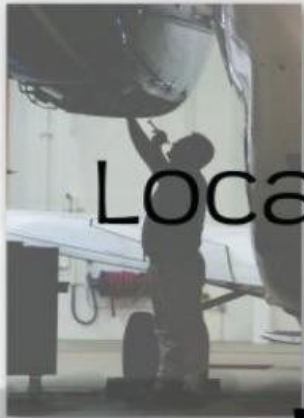
• Product: Airport/Facility Directory: Southwest U.S.

• Page Number: 239

• Description: WATSONVILLE MUNI (KWVI): Please add the following to the Airport Remarks section
All departures prohibited on Rwy 27 due to rwy visibility blocked by hangars/buildings.



Aviation Saves...



Local Economies



Jobs



Lives



Communities



Businesses