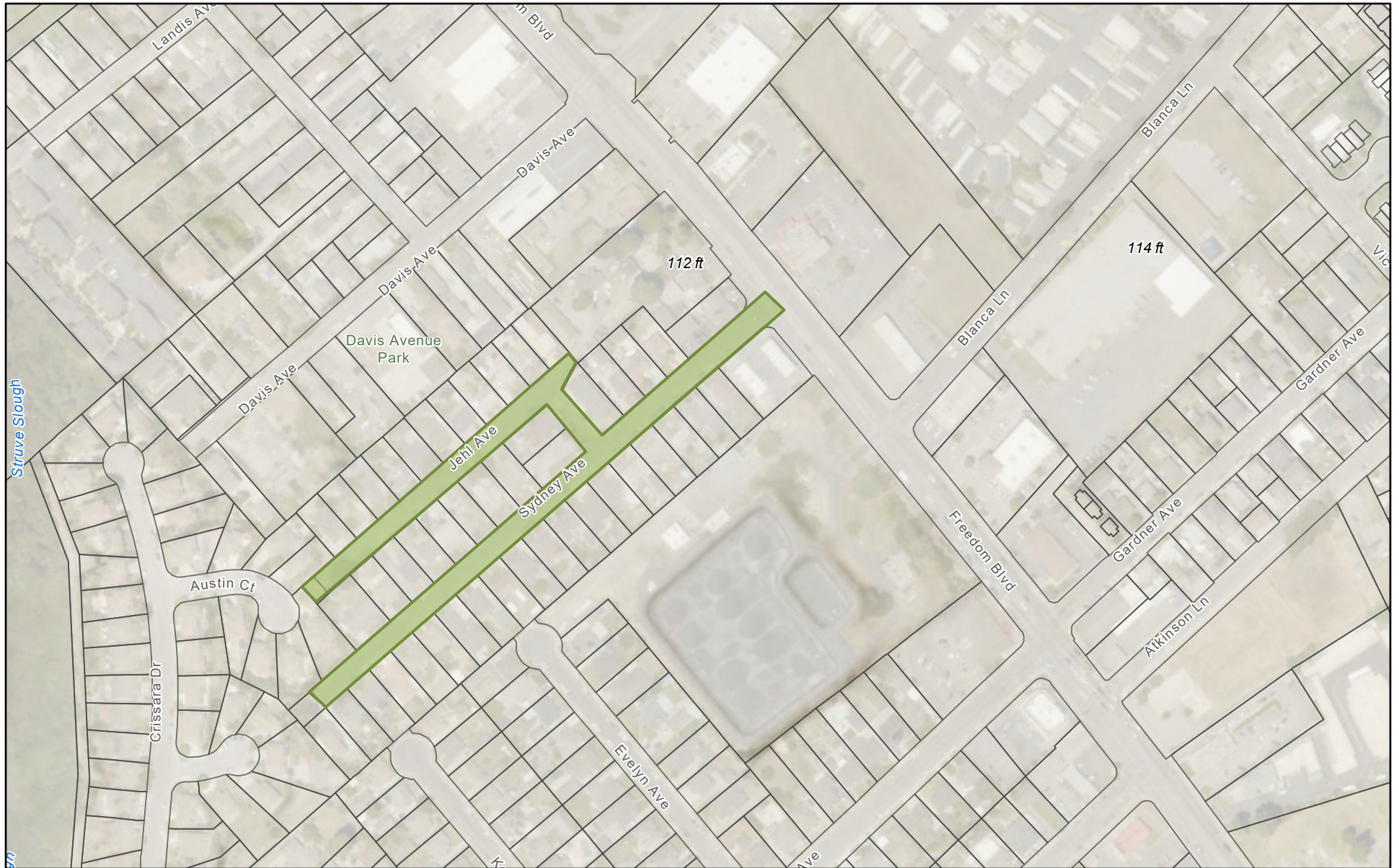


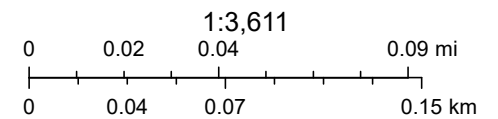


Sydney & Jehl Ave Sewer, Storm, Water Improvements Project Limits



3/25/2022, 11:21:30 AM

-  Parcels
-  City Boundary



Source: Esri, Maxar, GeoEye, Earthstar Geographics, CNES/Airbus DS, USDA, USGS, AeroGRID, IGN, and the GIS User Community, Sources: Esri,

GIS Viewer Application
City of Watsonville, CA